



AGENDA

TIDELANDS ADVISORY COMMITTEE

Regular Meeting Agenda

Monday, February 12, 2024, 4:00 p.m.

Council Chambers

825 Imperial Beach Boulevard

Imperial Beach, CA 91932

Public Comments: Members of the public can participate in-person at the Tidelands Advisory Committee meeting to provide public comments. Members of the public can also submit written comments prior to the meeting via e-mail at: comments@imperialbeachca.gov.

Copies of the written comments received **by noon** on the day of the meeting will be provided to the Committee and be made available to the public at the meeting. They will be part of the official record of the meeting, but they will not be read aloud at the meeting.

Please note in your email subject line the item on the agenda you wish to comment on.

In compliance with the Americans with Disabilities Act, the City of Imperial Beach requests that individuals who require reasonable accommodation to fully participate in this meeting contact the City Clerk's office at (619) 628-2347 or TTY 711 as soon as possible during regular business hours and not later than at least twelve (12) hours in advance of the meeting to discuss your accessibility needs.

Any writings or documents provided to a majority of the Committee regarding any item on this agenda will be made available for public inspection on the City's website at: https://www.imperialbeachca.gov/council_meetings.

1. **CALL TO ORDER**

2. **ROLL CALL**

3. **PUBLIC COMMENT**

Each person wishing to address the Tidelands Advisory Committee regarding items not on the posted agenda may do so at this time. In accordance with State law, the Tidelands Advisory Committee may not take action on an item not scheduled on the agenda. If appropriate, the item will be referred to City staff or placed on a future agenda.

4. **BUSINESS ITEMS**

4.a **APPROVAL OF MEETING MINUTES.**

3

Recommendation:

To approve the TAC Regular Meeting Minutes of November 13, 2023.

4.b **PROGRESS REPORT ON THE IMPERIAL BEACH COMMUNITY RESILIENCE PLAN.**

7

Recommendation:

That the Tidelands Advisory Committee receive the report and provide staff with feedback on the potential coastal flooding adaptation strategies.

5. **INFORMATIONAL ITEMS/REPORTS**

This item is intended for Staff to provide brief informational reports to the Board/Committee. Board/Committee members may also give brief reports related to items within the jurisdiction of the Board/Committee. Board/Committee members may ask brief questions of Staff, but cannot engage in dialogue or discussion with Staff or other members of the Board/Committee pursuant to the Brown Act. If appropriate, the item will be referred to a future agenda.

6. **ADJOURNMENT**



STAFF REPORT

TIDELANDS ADVISORY COMMITTEE

February 12, 2024

ITEM TITLE: APPROVAL OF MEETING MINUTES.

ORIGINATING DEPARTMENT:

CITY CLERK

RECOMMENDATION:

To approve the TAC Regular Meeting Minutes of November 13, 2023.

ATTACHMENTS:

ATT 1 – TAC Regular Meeting Minutes 11-13-23_DRAFT

**CITY OF IMPERIAL BEACH
TIDELANDS ADVISORY COMMITTEE
REGULAR MEETING MINUTES**

**November 13, 2023, 4:00 p.m.
Council Chambers
825 Imperial Beach Boulevard
Imperial Beach, CA 91932**

Members Present: Member Keating, Vice Chair Ellis, Member Fischer

Members Absent: Member Lavan

Staff Present: Assistant City Clerk Malone, City Planner/Management Associate Ayala

1. CALL TO ORDER

Vice Chair Ellis called the meeting to order at 4:00 p.m.

2. ROLL CALL

Assistant City Clerk Malone took the roll.

3. PUBLIC COMMENT

No Public Comments.

4. BUSINESS ITEMS

4.1 APPROVAL OF MEETING MINUTES.

Motion by Member Keating

Seconded by Member Fischer

Approved the August 14, 2023, TAC Regular Meeting Minutes.

AYES (3): Member Keating, Vice Chair Ellis, and Member Fischer

ABSENT (1): Member Lavan

Motion Carried (3 to 0)

4.2 SAN DIEGO UNIFIED PORT DISTRICT IMPERIAL BEACH PIER IMPROVEMENTS PHASE 3.

Rudy Zelaya, Assistant Director with the Engineering/Construction Department at the Port of San Diego gave a PowerPoint presentation.

Mr. Zelaya stated that Reyes Construction is the contractor for the project.

Mr. Zelaya stated that the lead agency for Project 3 is the City of Imperial Beach, and they are working with the City of Imperial Beach directly in terms of CEQA and permitting.

Mr. Zelaya explained that the project was accepted into the Port of San Diego's program called the Balance Capital Program formally known as CIP, which approves the funding for the project. In terms of CEQA approval, the Port of San Diego goes through the City.

City Planner/Management Associate Ayala explained that the Port of San Diego is required to apply for a Coastal Development Permit with the City. The City Council who acts as the Planning Commission will approve or deny that request. Any input provided by the TAC the Port of San Diego will work with staff to incorporate. Michelle Chan, Program Manager, Development Services for the Port of San Diego stated that there are no additional CEQA and/or discretionary actions that the Port will need to work on for Project 3 unless there are additional comments from the Coastal Commission. She also explained that as part of the project, piles will be installed to support the new decks, depending on if the Coastal Commission considers that at fill, a portion of the piles may become inundated with water and the Coastal Commission may say mitigation is needed, depending on if it is a CEQA mitigation the project would not be CEQA exempt.

Mr. Zelaya confirmed that the project consists of four piles, two on each of the deck extensions.

In response to Member Fischer's question, City Planner/Management Associate Ayala confirmed that staff has reviewed the project's design and provided comments to the Port, however, as part of the process should the Committee have comments related to the design of the project for the Port to consider this would be the time to present those comments. It was also confirmed by Port staff that the seating is directly under the canopy and will be shaded for portions of the day.

Member Keating expressed concern about people attempting to jump and touch the fins on the canopy and wanted to make sure it is constructed out of something safe. He also expressed that illumination in the project area is important but to consider not having a light on 24/7 because it takes away from the night views of the water and stars. He also stated that there should be consideration of allowing fishing in the shaded area of the project, because it could cause a hinderance in access to the general public.

Member Fisher agreed with Member Keating that the fin material should be something soft.

5. INFORMATIONAL ITEMS/REPORTS

None.

6. ADJOURNMENT

Vice Chair Ellis adjourned the meeting at 4:25 p.m.

Audrey Malone
Assistant City Clerk

Joseph Ellis
Vice Chair

DRAFT



STAFF REPORT

TIDELANDS ADVISORY COMMITTEE

February 12, 2024

ITEM TITLE: PROGRESS REPORT ON THE IMPERIAL BEACH COMMUNITY RESILIENCE PLAN.

ORIGINATING DEPARTMENT:

Community Development

EXECUTIVE SUMMARY:

The City of Imperial Beach was granted \$250,000 from the National Fish and Wildlife Foundation (NFWF) to develop the Imperial Beach Community Resilience Plan, which would allow the City to engage stakeholders and complete extensive data collection to gain a better understanding of the existing constraints, survey the coastal areas, establish a baseline and monitoring program, ensure broad utility of the resilience plan, and build capacity to enable planning of future adaptation projects, strategies and other activities.

The City Council adopted Resolution 2023-22 on April 5, 2023 enabling the City to enter in to a Professional Services Agreement with GHD Inc., as the consultant for the development of the Imperial Beach Community Resilience Plan (IB CRP), and since then, the project team including both City staff and the consultant team have been conducting extensive work on the project; this has included: developing a work plan, collecting baseline data, completing outreach with the community, and identifying potential adaptation strategies based on geography/current conditions and projected future conditions. The intent of this progress report is to provide an informational report/update on the project activities and progress thus far, present the initial draft potential coastal adaptation strategies, and receive comments from the Tidelands Advisory Committee.

RECOMMENDATION:

That the Tidelands Advisory Committee receive the report and provide staff with feedback on the potential coastal flooding adaptation strategies.

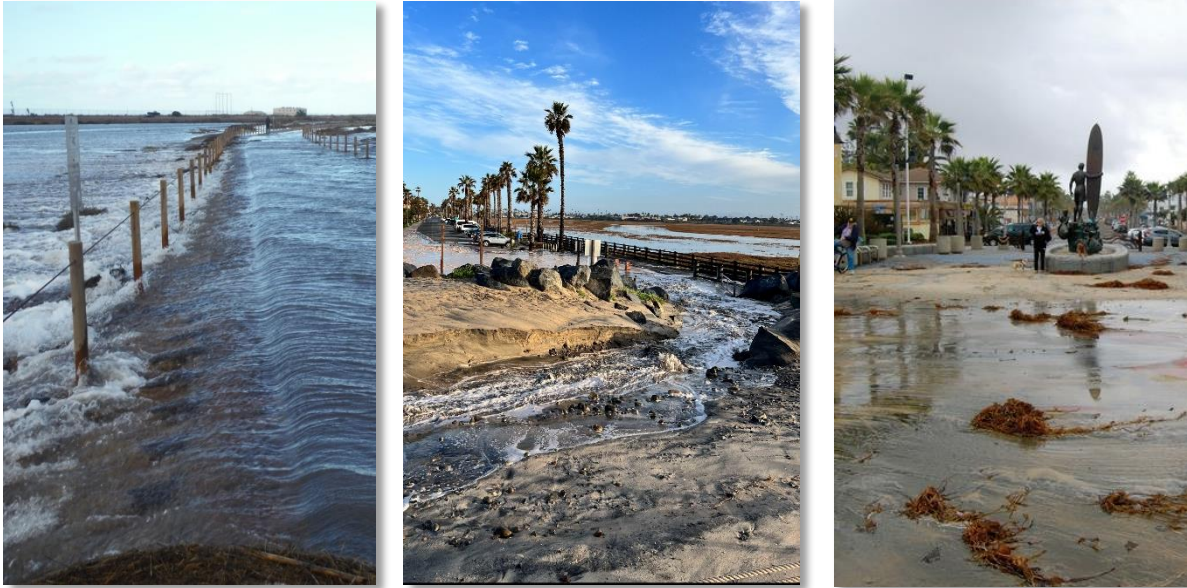
OPTIONS:

The Tidelands Advisory Committee can also:

- Receive the report; or
- Request additional information.

BACKGROUND/ANALYSIS:

The City of Imperial Beach completed a Sea Level Rise Vulnerability Assessment in 2016 which identified the impacts that the City currently experiences related to hazards such as tidal inundation and flooding that will be further exacerbated in the future due to Sea Level Rise. According to the study, significant impacts are projected to start occurring with a 1.6-foot increase in Sea Level Rise should the City not implement any adaptation strategies. While it became apparent from the assessment that Imperial Beach is one of the most vulnerable communities to sea-level rise in California, and it is known that Imperial Beach experiences wave and tidal flooding, coastal erosion, and high groundwater during high tides and storm events, even with the efforts taken with the Sea Level Rise Vulnerability Assessment, Imperial Beach is still at the early phase of understanding and identifying coastal resilience needs for our community.



This is largely due to hurdles associated with determining the feasibility of adaptation projects that can increase the City's resiliency. One of the consistent roadblocks that is difficult to address are the constraints analysis and establishment of a baseline. There is a need for additional data analysis and collection to establish the baseline conditions within the City and to identify shoreline adaptation strategies that incorporate natural infrastructure. Additionally, there is a need to have a living, working document that incorporates policies that address the vulnerable populations that currently experience impacts related to coastal flooding and sea level rise. The development of an Imperial Beach Community Resilience Plan would include an implementation plan, a monitoring plan, and the policy framework needed to allow for the planning and implementation of adaptation/mitigation/resilience projects.

The National Fish and Wildlife Foundation (NFWF) released the National Coastal Resilience Fund (NCRF) Grant request for pre-proposals in April of 2021 for approximately \$34 million in grants to create and restore natural systems to increase protection for communities from coastal storms, sea- and lake-level changes, inundation, and coastal erosion, while improving habitats for fish and wildlife species. The grant included four priority areas: Community Capacity Building and Planning, Site Assessment and Preliminary Design, Final Design and Permitting, and Restoration and Monitoring. City staff identified this grant as an opportunity to utilize the funding for the priority area Community Capacity Building and Planning to address the need of identifying adaptation pathways to address impacts related to flooding and sea level rise through the development of the Imperial Beach Community Resilience Plan (IBCRP).

As such, City staff submitted a pre-proposal for \$250,000 to develop the Imperial Beach Community Resilience Plan and was invited to submit a full proposal in May of 2021. After submitting the full proposal, the City was awarded the \$250,000 NCRF Grant.

The full proposal was for the Imperial Beach Community Resilience Plan Project. Through the project, staff would engage stakeholders and complete extensive data collection to gain a better understanding of the existing constraints, survey the coastal areas, establish a baseline and monitoring program, ensure broad utility of the resilience plan, and build capacity to enable planning of future adaptation projects, strategies and other activities.

The Imperial Beach Community Resilience Plan Project proposed activities are as follows:

- Creation of a work plan and outline
- Constraints and opportunities analysis
- Outreach and Planning Coordination
- Development of a draft Imperial Beach Community Resilience Plan
 - Monitoring Plan
 - Implementation Plan
- Public Review process
- City Council Consideration of Adoption of a Final Plan

The resulting plan will guide the City in risk management and mitigation while enhancing surrounding habitats by balancing core community needs with the ecological principles and processes that afford Imperial Beach the best protection over time. Key partners include Imperial Beach residents, Port of San Diego, Tijuana River National Estuarine Research Reserve, US Fish & Wildlife Service, and Scripps Center for Climate Change Impacts and Adaptation.

Pursuant to Imperial Beach Municipal Code (IBMC) Section 3.04.160, the request for qualifications/proposals (RFQ/P) for professional consultant services for the development of the IB CRP was posted on January 25, 2023 and the submittal period came to a close on February 27, 2023. The City received four (4) consultant proposals, and after much consideration by the City's Selection Committee, it was found that the most qualified consultant team that best met the evaluation criteria to work on the development of the IB CRP would be GHD Inc. As such, the City Council adopted Resolution 2023-22 on April 5, 2023 enabling the City to enter in to a Professional Services Agreement with GHD Inc., as the consultant for the development of the IB CRP.

After contracting with GHD Inc., the project team has spent the past seven months conducting extensive work on the project, completing a Work Plan, collecting baseline data, completing outreach with the community, and identifying potential adaptation strategies based on geography/current conditions and projected future conditions. Provided below is a comprehensive summary listing the activities completed thus far:

Task 1: Work Plan and Outline (includes data collection)

Work Plan

The project team has developed a Work Plan (Attachment 3) to guide the team towards project completion. This Work Plan is regularly reviewed and updated incorporating new information and community feedback.

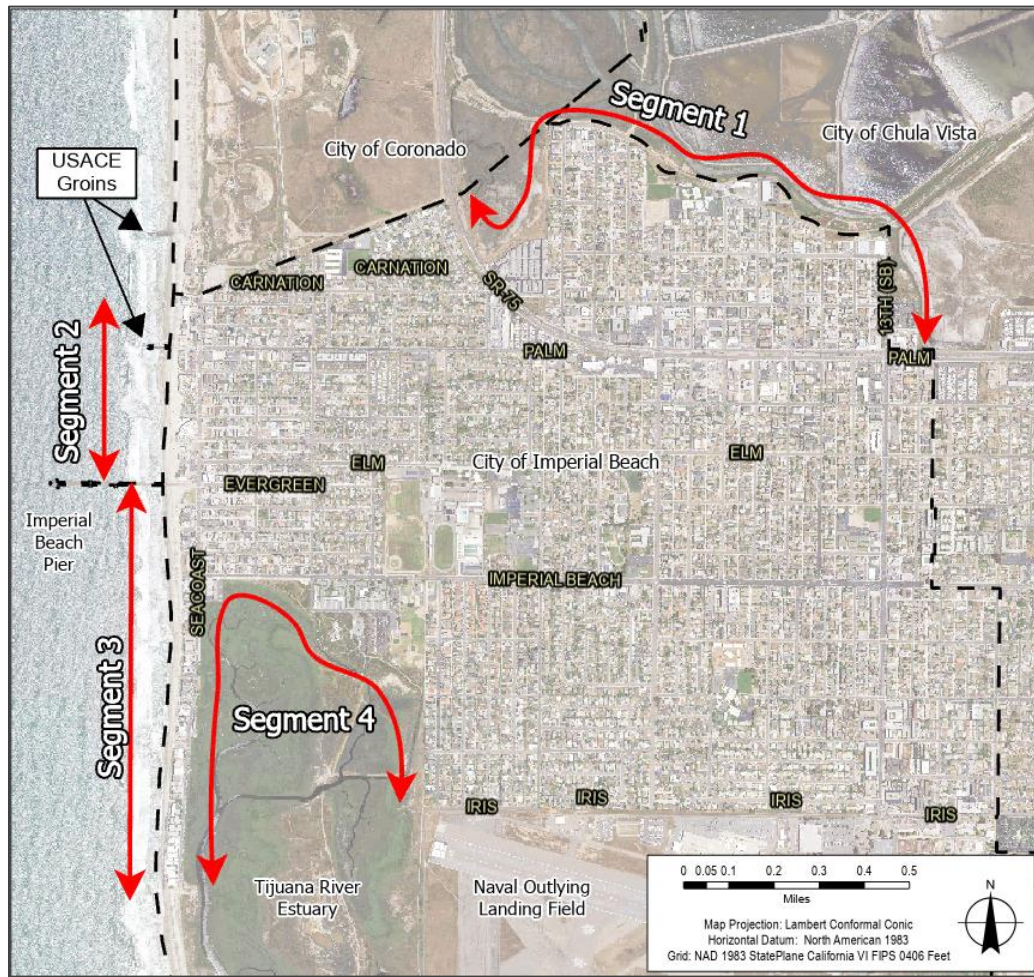
Data Collection

The Project Team has been coordinating with the Port of San Diego for GIS/CAD layer of areas in the City of IB that are leased or managed by the Port. This data was then overlain on Imperial Beach parcels to illustrate the location of revetment in contrast to property boundaries. Additionally, the Project Team collected Coastal Development Permit data from the California Coastal Commission to better understand the opportunities and constraints of potential sea level

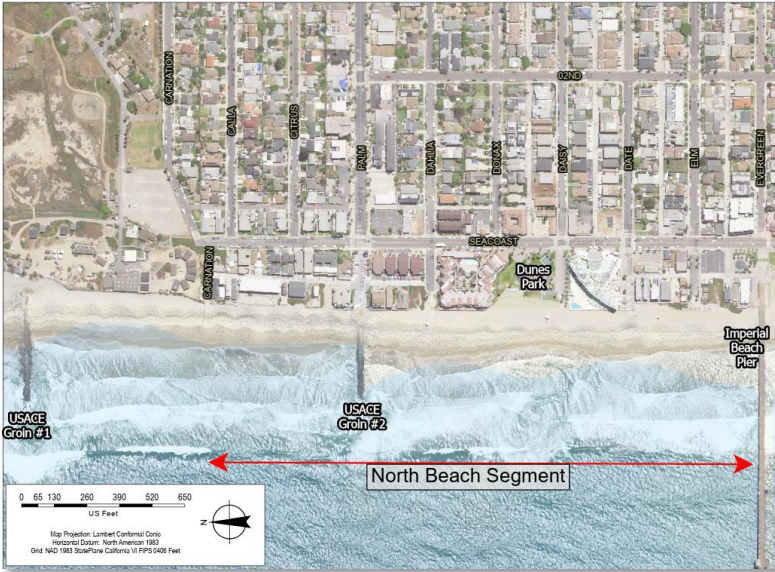
rise adaptation strategies. An engineering survey is in process to better understand the baseline conditions along the coast. The survey is a two-step process including aerial photography and an on-the-ground survey. The output will give the Project Team a better understanding of existing shoreline protection in relationship to property lines and structures.

Task 2: Constraints and Opportunities Analysis:

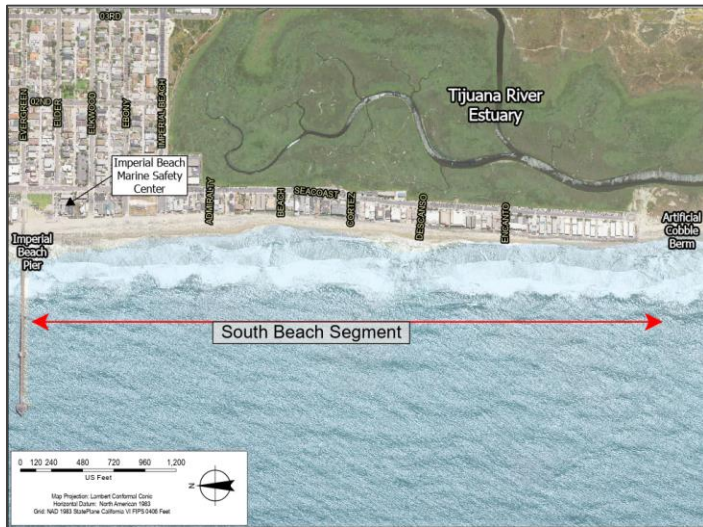
After review of the available baseline data for the project, the project team completed a feasibility analysis to identify potential adaptation strategies for specific areas in the City currently impacted by seasonal flooding and forecast to be substantially affected by future sea level rise. These areas are adjacent to the Bayfront, the ocean, and the estuary. For the Bayfront, the Bayshore Bikeway Resiliency Project incorporates a living levee with ecotone slope and flood detention basin adaptation strategies to address existing and future flooding. Development of 100% designs is currently underway. For the areas adjacent to the ocean and the estuary, the feasibility analysis identified opportunities to enhance flood protection at existing beach access areas, street ends, and areas directly adjacent to the estuary. Taking into account the results from the feasibility analysis, the project team has identified potential draft coastal adaptation strategies (Attachment 1). The project team is requesting that the Tidelands Advisory Committee review the potential coastal flooding adaptation strategies and provide feedback.



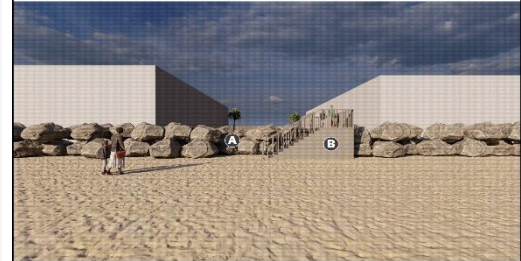
Segment 2: Potential Living Shoreline and/or Extending Groins



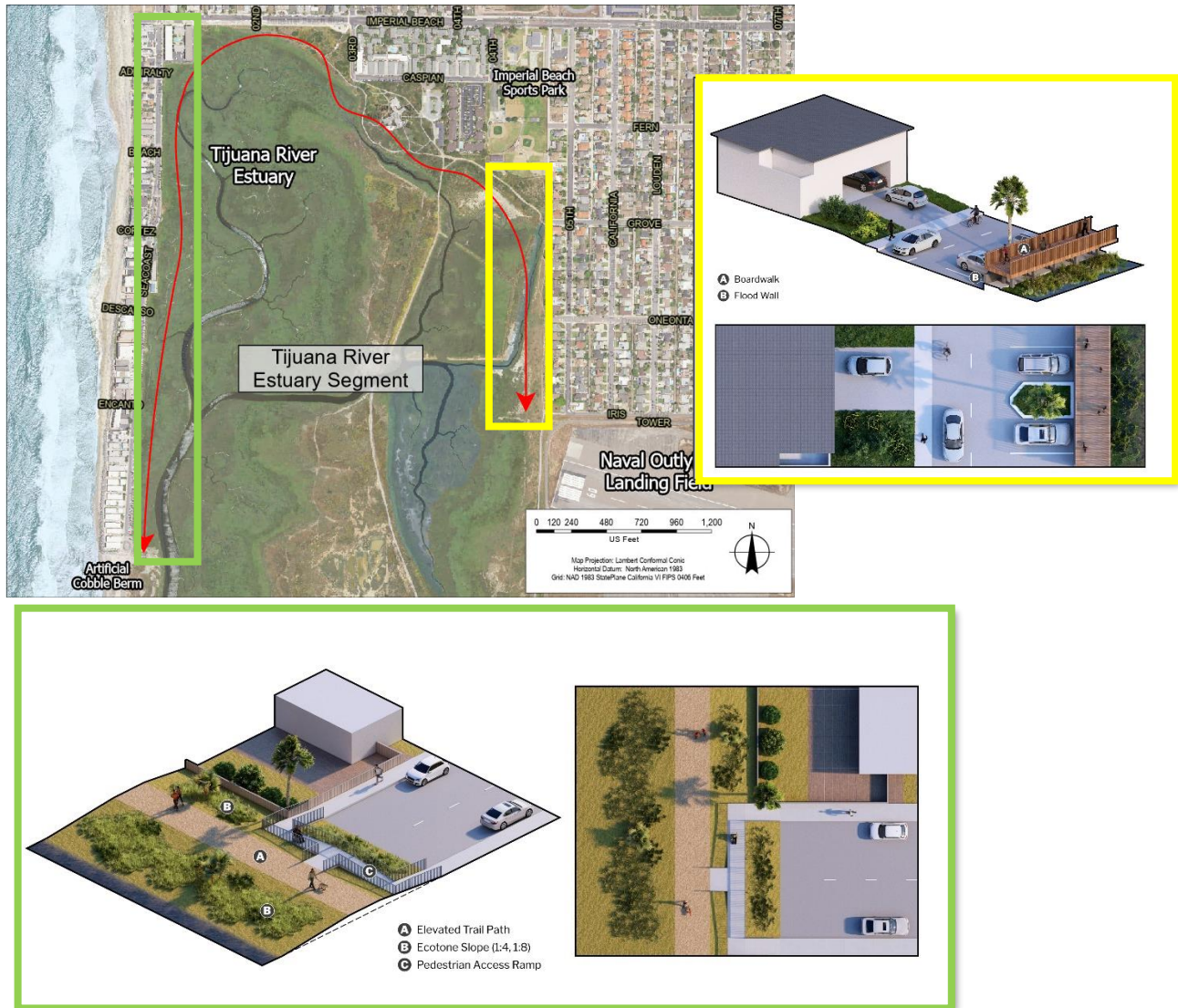
Segment 3: Fill gaps in the revetment at access points or elevate existing revetment to adjacent elevation



- A Revetment Gap Filled
- B Pedestrian Access



Segment 4: (Green) Floodwall on the estuary side of south Seacoast Drive that is adaptable with an elevated boardwalk and (Yellow) Living levee with elevated path adjacent to the Seaside Point Neighborhood



Task 3: Outreach and Planning Coordination

Outreach Preparation and Planning

- There are two types of community outreach used in the project:
 - a. Raise awareness: Online and print marketing disseminated to the community in a format that allows community members to spread the word about the project.
 - i. The Project team has developed a project website, a logo, business cards, and talking points as part of the Awareness campaign. These project marketing materials have been included as Attachment 3.



- b. Workshops, pop-ups, and surveys: Intended to inform and collection information from the community, these may be standalone events or tied to preexisting Imperial Beach community events.
 - i. So far, the project team has conducted six in person outreach events.



Outreach Events Summary

- Surfrider beach cleanup event on June 17th, 2023 in Imperial Beach, project team staff provided a project overview to attendees.
- City's National Night Out in Veteran's Park on August 2nd, 2023. The team spoke with approximately 30 individuals. Participants also provided feedback on how the City can be more resilient and how it can thrive. Participants provided feedback on government services, social interactions, economic development, and environmental conditions.
- The Project team participated in the monthly Farmer's Market in Veteran's Park on August 19th, 2023. The team spoke with approximately 45 individuals. The participants also provided feedback on how the City can be more resilient and how it can thrive. Participants provided feedback on government services, social interactions, economic development, and environmental conditions.
- The Project team had a booth for Bike the Bay on Sunday, August 27th at Bikeway Village (see attached Facebook promotion). Similar to the Farmer's Market, the team received feedback from the community on areas for improvement and learned about next steps in the project.
- The Project team participated in the Movie in the Park on Friday, September 1st, 2023.
- The Project team participated in the monthly Farmer's Market in Veteran's Park on September 16th, 2023. The team spoke with approximately 15 individuals. The participants provided feedback, although more focused on water quality in the ocean.

Next Steps

Moving forward, the next steps for the project will be to complete additional project outreach with the community with pop up events, taking the project to the City Council for review, and to complete two formal project workshops. Once the additional feedback is collected from the community, the draft IB CRP will be drafted. This draft will be made available for public review and comment with revisions being made to the IB CRP after the public comment period comes to a close. Once the document is finalized it will be presented to the City Council.

ENVIRONMENTAL DETERMINATION:

Not a project as defined by CEQA.

FISCAL IMPACT:

FISCAL YEAR:	22/23 and 23/24
BUDGETED:	\$250,000
BUDGET AMENDMENT	Budget amendment was approved in August 2022 with Resolution 2022-57. The amendment increased expenditures in account 214-1230-413.2006 (Professional Services) in the amount of \$250,000 using the project number SP23102-P and increased revenues in account 214-0000-334.4002 (Misc/Private Grants) using the project number SP23102-REV in the amount of \$250,000 (for the NCRF grant).
ACCOUNT NO(S):	214-1230-413.2006 and 214-0000-334.4002
PROJECT NO(S):	SP23102-P and SP23102-REV
FISCAL ANALYSIS:	The National Fish and Wildlife Foundation awarded the City of Imperial Beach a \$250,000 grant.
CURRENT BUDGET:	n/a
ANTICIPATED EXPENDITURE:	\$250,000

ATTACHMENTS:

- ATT 1 – Draft Potential Coastal Adaptation Strategies
- ATT 2 – IB CRP Work Plan
- ATT 3 – Marketing Materials



Imperial Beach COMMUNITY RESILIENCE PLAN

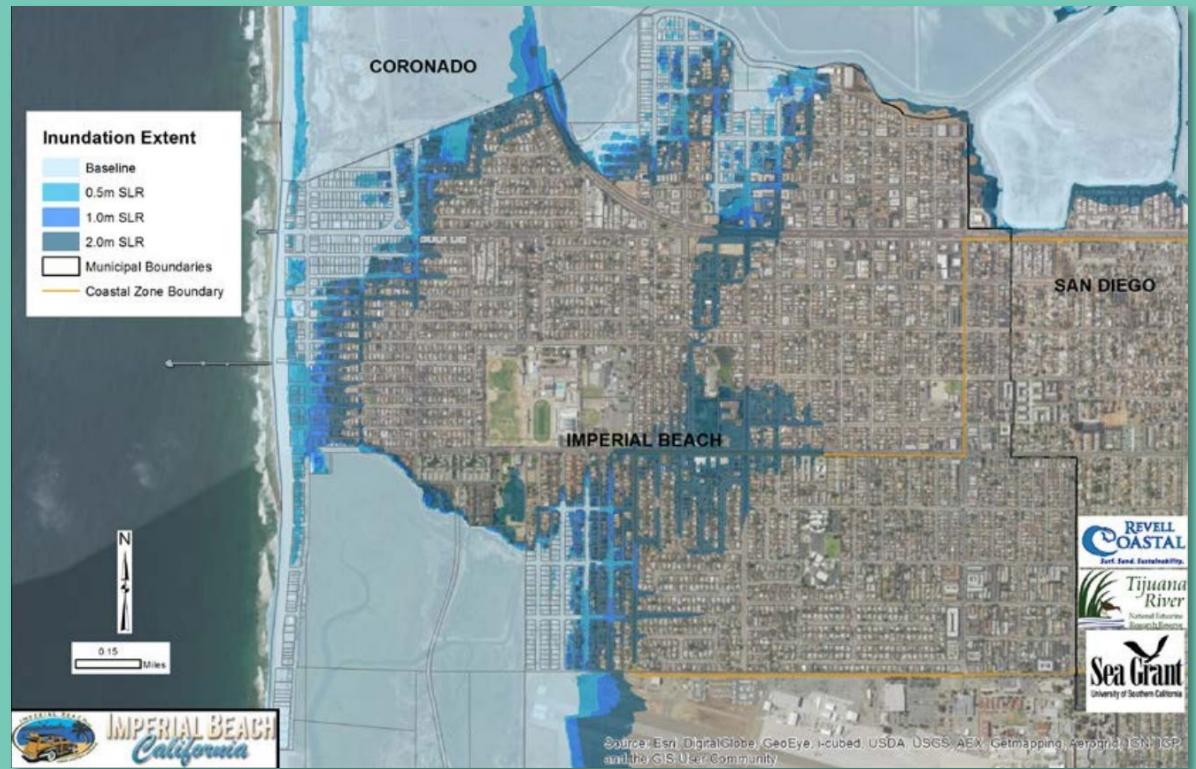
Draft Potential Coastal Adaptation Strategies



Imperial Beach Existing and Future Flood Conditions

Existing coastal hazards and impacts

- Nuisance flooding
- Wave overtopping
- Road closures
- Infrastructure damage



Future coastal hazards and impacts with sea level rise

- 1.7 miles of road potentially subject to coastal erosion from a 100-year wave erosion event
- All beach access/oceanfront properties are in existing coastal erosion and coastal flood hazard zones associated with a 100-year wave event
- Existing coastal flooding in Seacoast Drive, 7th St., and Grove Avenue. All struggle to drain water during periods of coincident high tides, heavy rains, or big surf

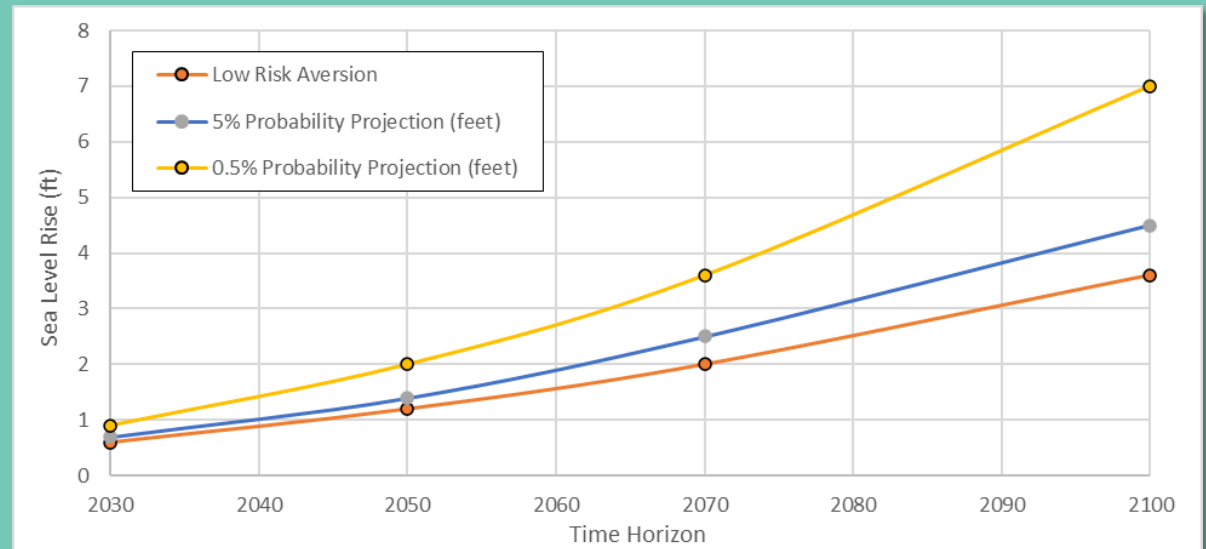
Sea Level Rise Projections

State of California goal is to plan and prepare for:

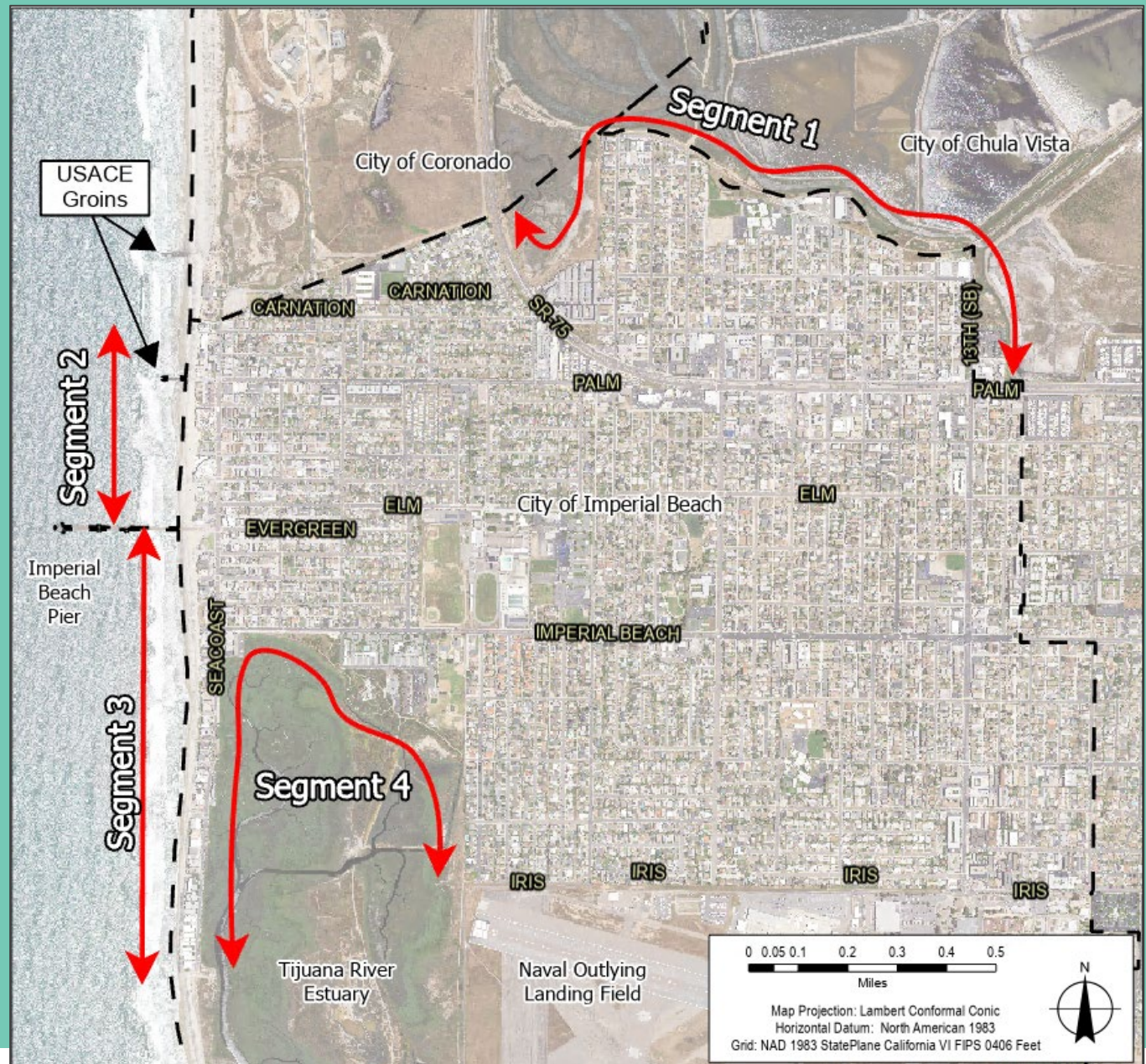
- 3.5' by 2050
- 6.0' by 2100

The **Community Resilience Plan** is evaluating mid-term solutions that can be adapted in the long-term.

Time Horizon	Low Risk Aversion		Medium Risk Aversion	Medium-High Risk Aversion
	66% Probability SLR is between		5% Probability SLR meets or exceeds...	0.5% Probability SLR meets or exceeds
2030	0.4	0.6	0.7	0.9
2050	0.7	1.2	1.4	2.0
2070	1.1	2.0	2.5	3.6
2100	1.8	3.6	4.5	7.0



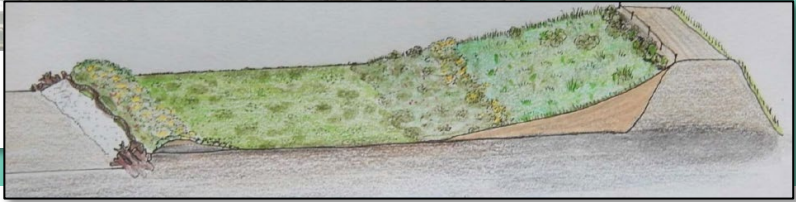
Feasibility analyses focused on the four areas of the City that currently flood and are forecasted to be substantially impacted flooding and inundation from future sea level rise.



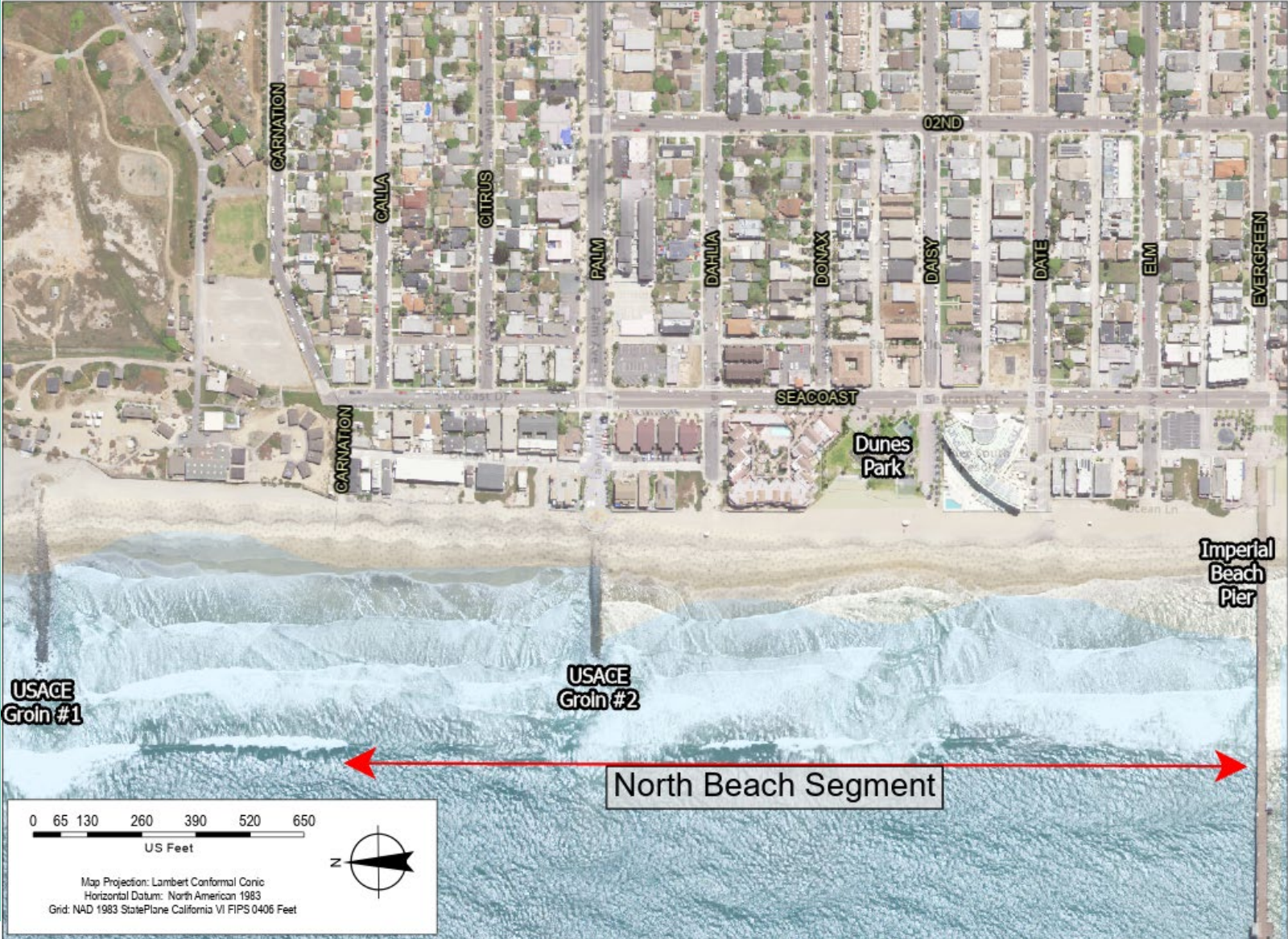
Segment 1



Segment 1



Segment 2

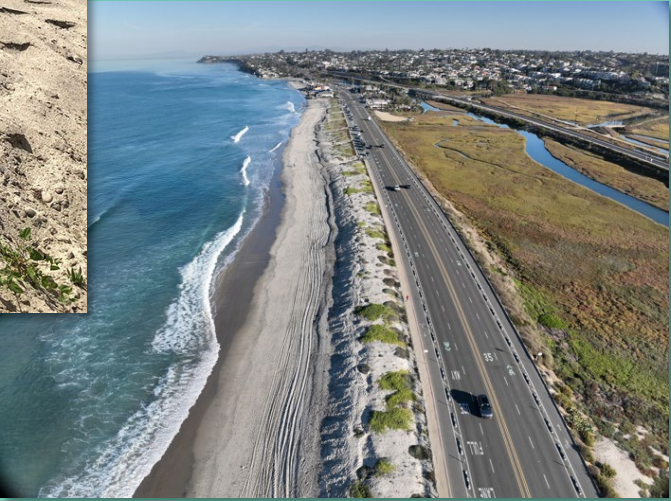


Segment 2



Potential Solution:

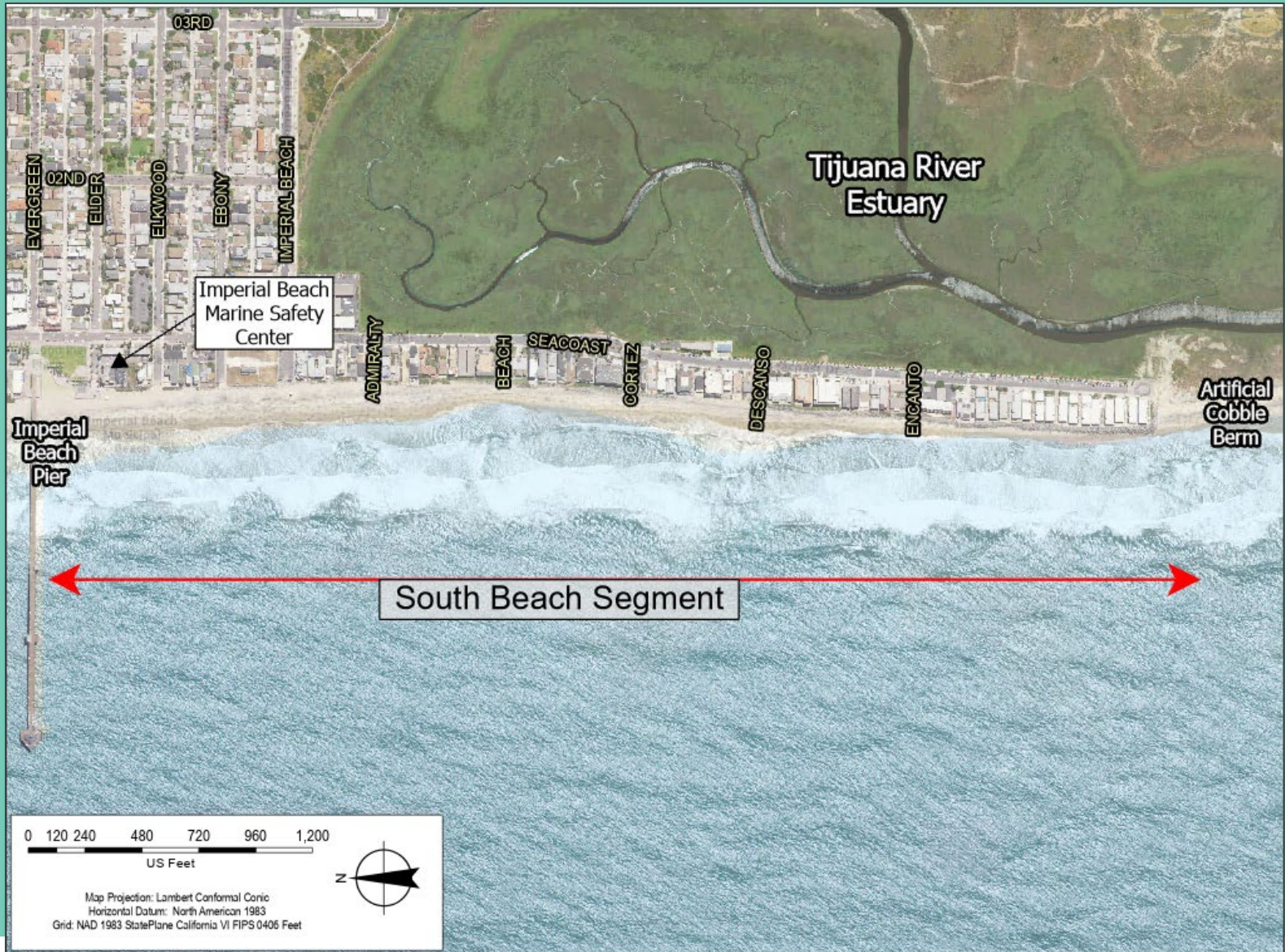
Consider extending existing groins to permitted length.



Potential Solution:

Nature-based solution like the Cardiff Beach Living Shoreline Project

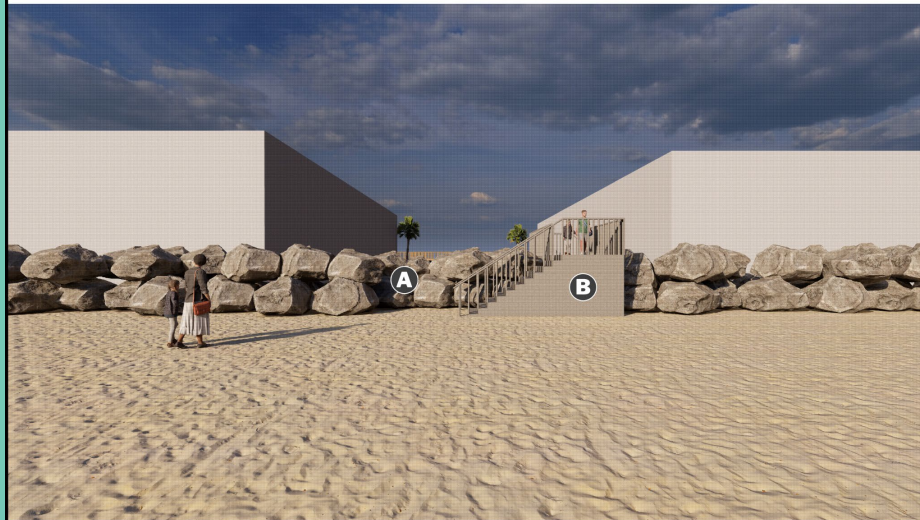
Segment 3



Segment 3

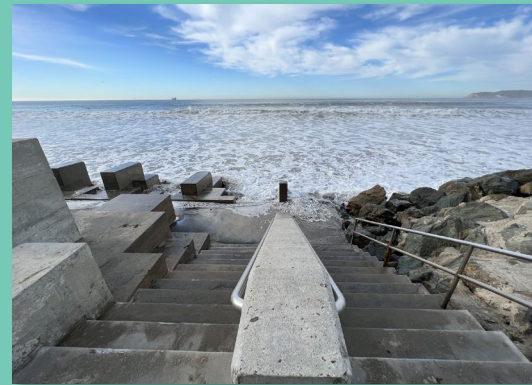


- A** Revetment Gap Filled
- B** Pedestrian Access



Potential Solution:

Fill gaps in the revetment at access points or elevate existing revetment to adjacent elevation



Segment 4

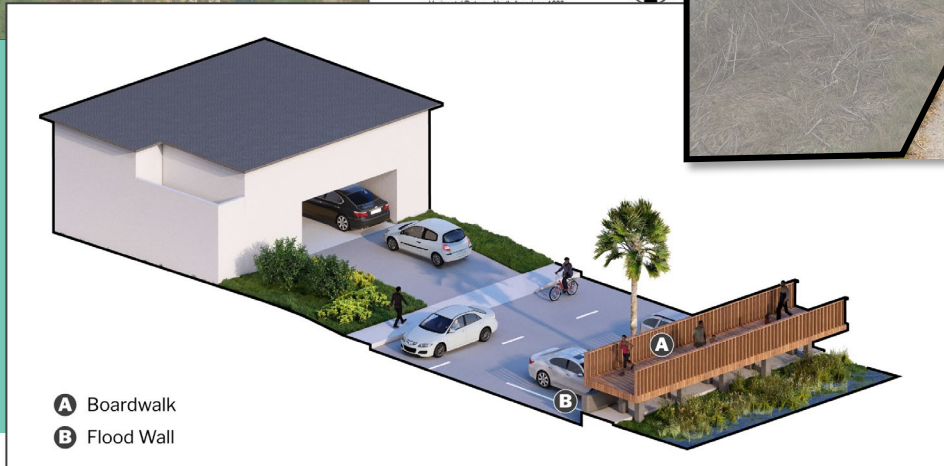


Segment 4

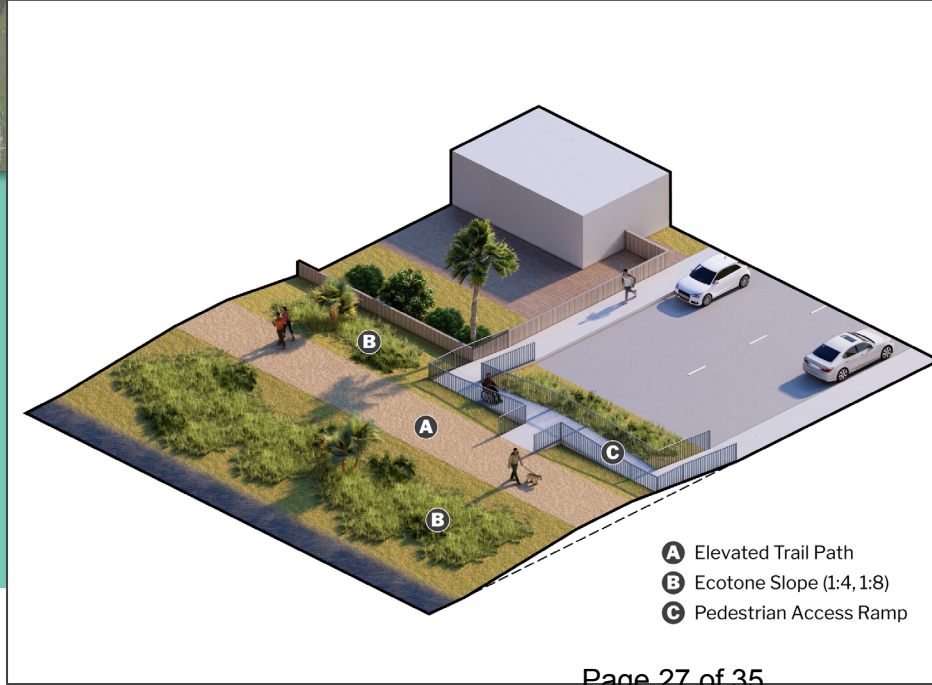
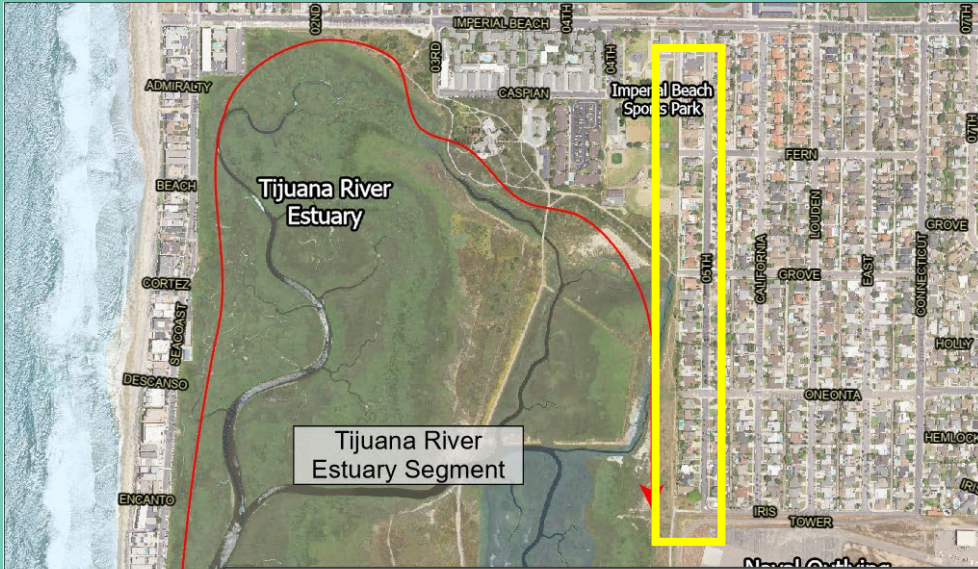


Potential Solution:

Floodwall on the estuary side of south Seacoast Drive that is adaptable with an elevated boardwalk



Segment 4

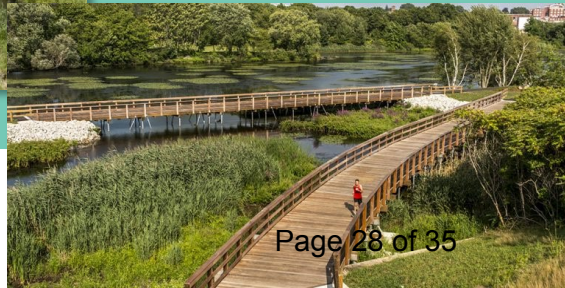


Potential Solution:

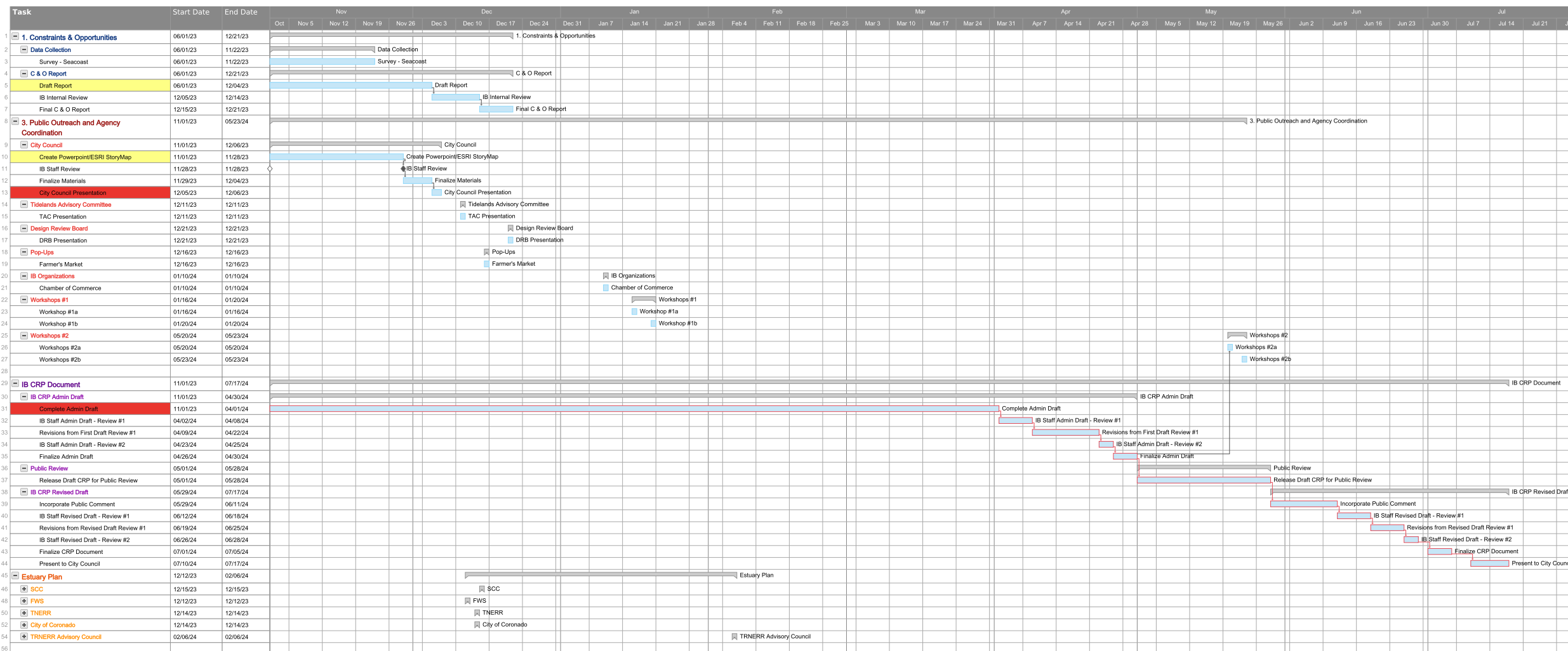
- Living levee with elevated path
- Ecotone slope
- Pedestrian access ramp

Segment 4

Potential Solution: Estuary Promenade with community connections and estuary activation. Promenade serves multi-benefit as public access and flood protection.



IB CRP - Work Plan





Imperial Beach COMMUNITY RESILIENCE PLAN

Resilient & Thriving

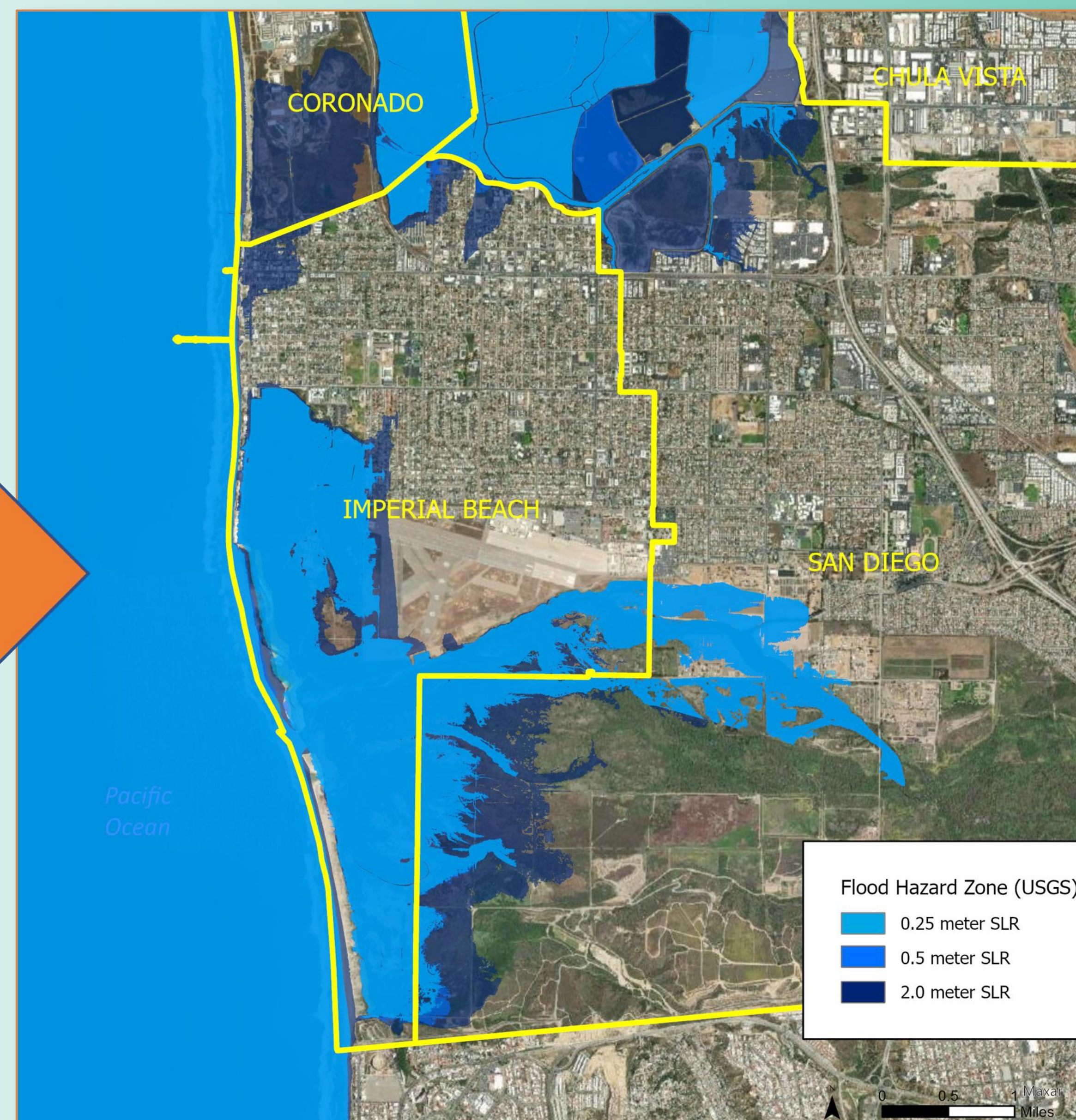
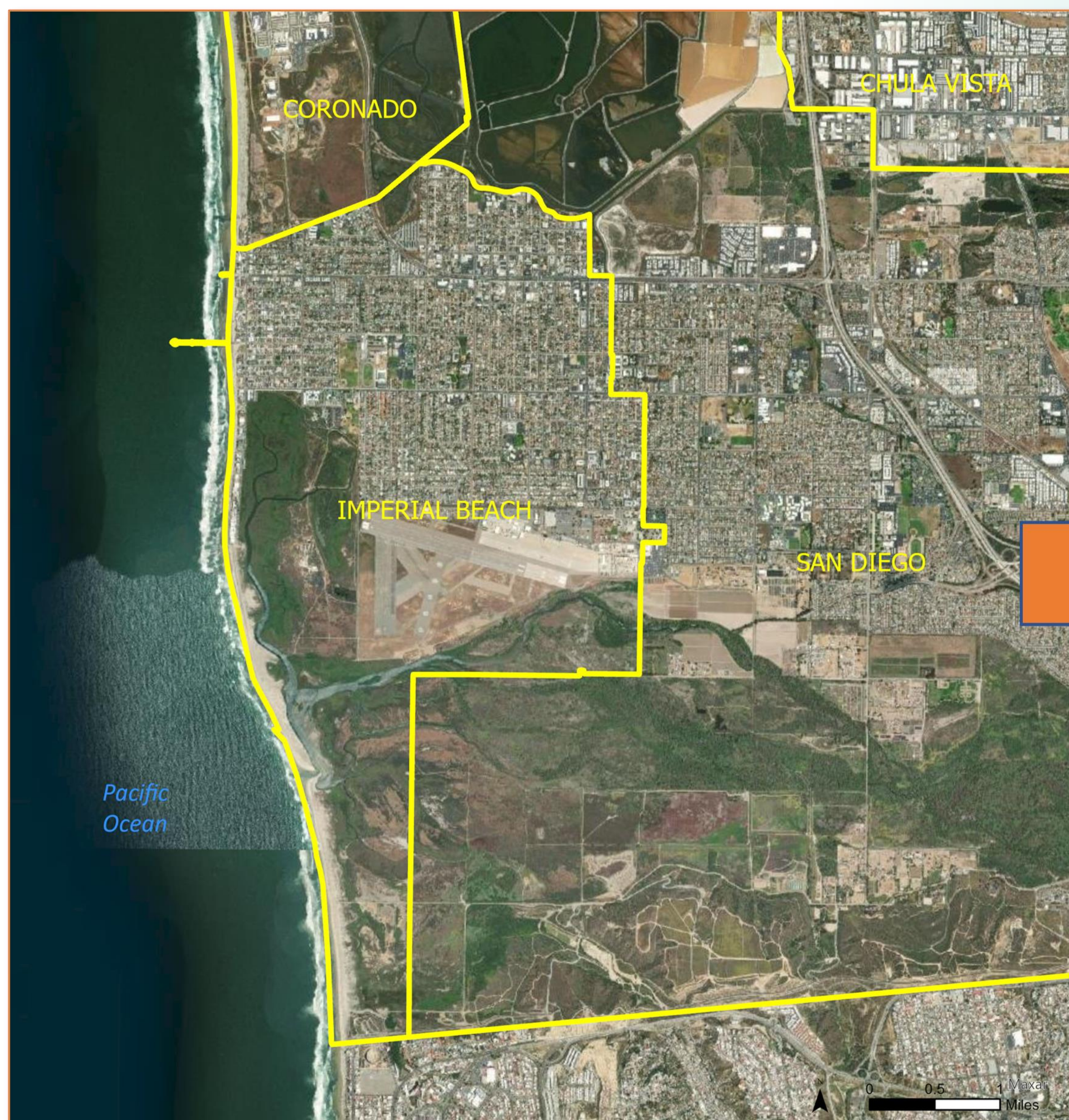
As a low-lying coastal community that is bounded by water on three sides, the City of Imperial Beach is vulnerable to natural hazards such as coastal flooding that can disrupt the resident's daily lives and local business operations. Flooding may also reduce City services and impact critical infrastructure.

The State of California encourages cities to plan and prepare for projected increases in the impacts from coastal flooding and inundation.



Source: Scripps Institute of Oceanography, 2023

The Imperial Beach Community Resilience Plan would create an adaptation management and monitoring plan/program that include strategies to address flooding impacts, encourage nature-based solutions, and adequately addresses the needs of residents that currently experience flooding are projected to be substantially impacted by future coastal flooding.



What is resilience?

Resilience is the ability to recover quickly and to adapt to future conditions. This can mean improved emergency communications, forming closer community bonds, or planning for disasters.



What does it mean to thrive?

Planning for a natural disaster also provides opportunities to make Imperial Beach better. This can mean more parks, better transportation, and safe streets.

Funding provided by:



NFWF



For more information: www.IBCommunityResilience.com



What makes a Resilient and Thriving...?



Opportunities (Thrive)

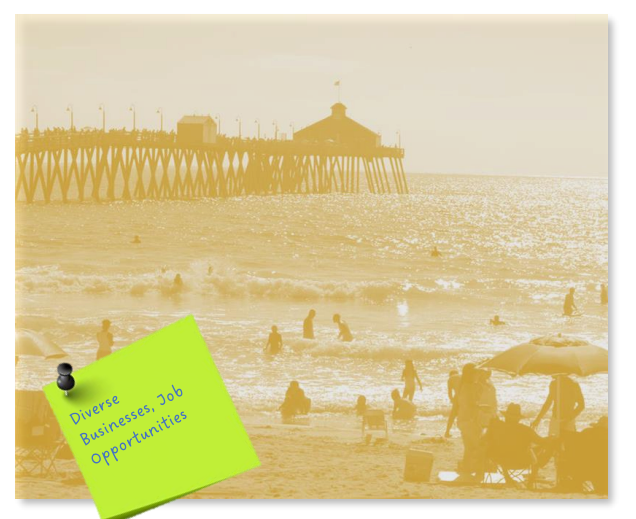
Needs (Be Resilient)

Needs (Be Resilient)

Opportunities (Thrive)

INSTRUCTIONS

Apply a sticky note in the colored squares describing what you think are the City's needs and opportunities to thrive and be resilient



Needs (Be Resilient)

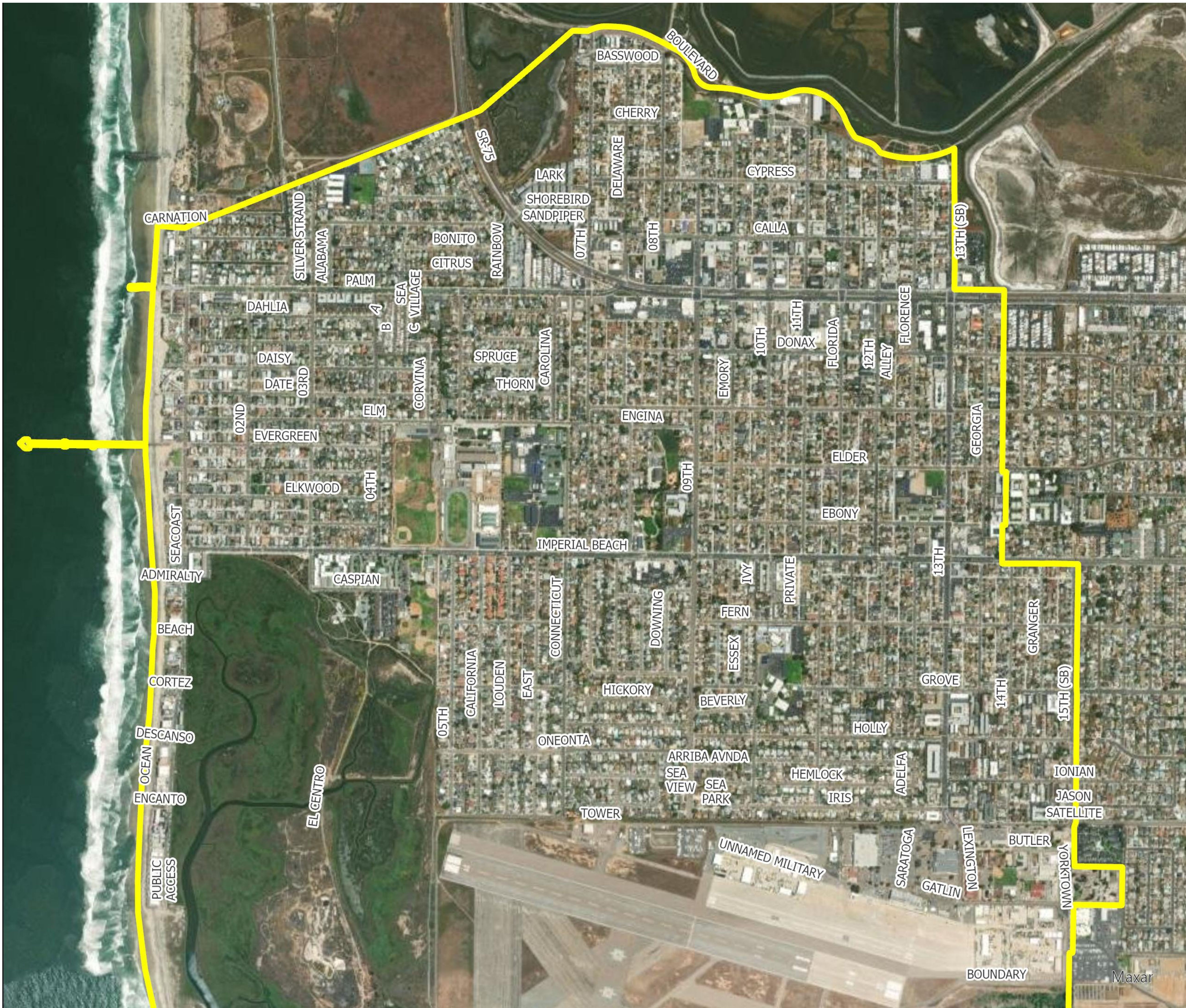
Opportunities (Thrive)



Where should we focus our efforts?

INSTRUCTIONS

Apply a sticky note on the map describing what improvements you think will make an area thrive and be more resilient





Imperial Beach

COMMUNITY RESILIENCE PLAN

www.IBCommunityResilience.com

Page 33 of 35

CITY OF IMPERIAL BEACH





Imperial Beach COMMUNITY RESILIENCE PLAN

We want your feedback!

Please visit our booth at Bikeway
Village (end of 13th Street)

August 27th, 2023

8:00 - 11:00 AM

Topics of Discussion

- Flooding
- Community Concerns
- Opportunities for Improvement



For more information: www.IBCommunityResilience.com
619.628.0858 or mopenshaw@imperialbeachca.gov

