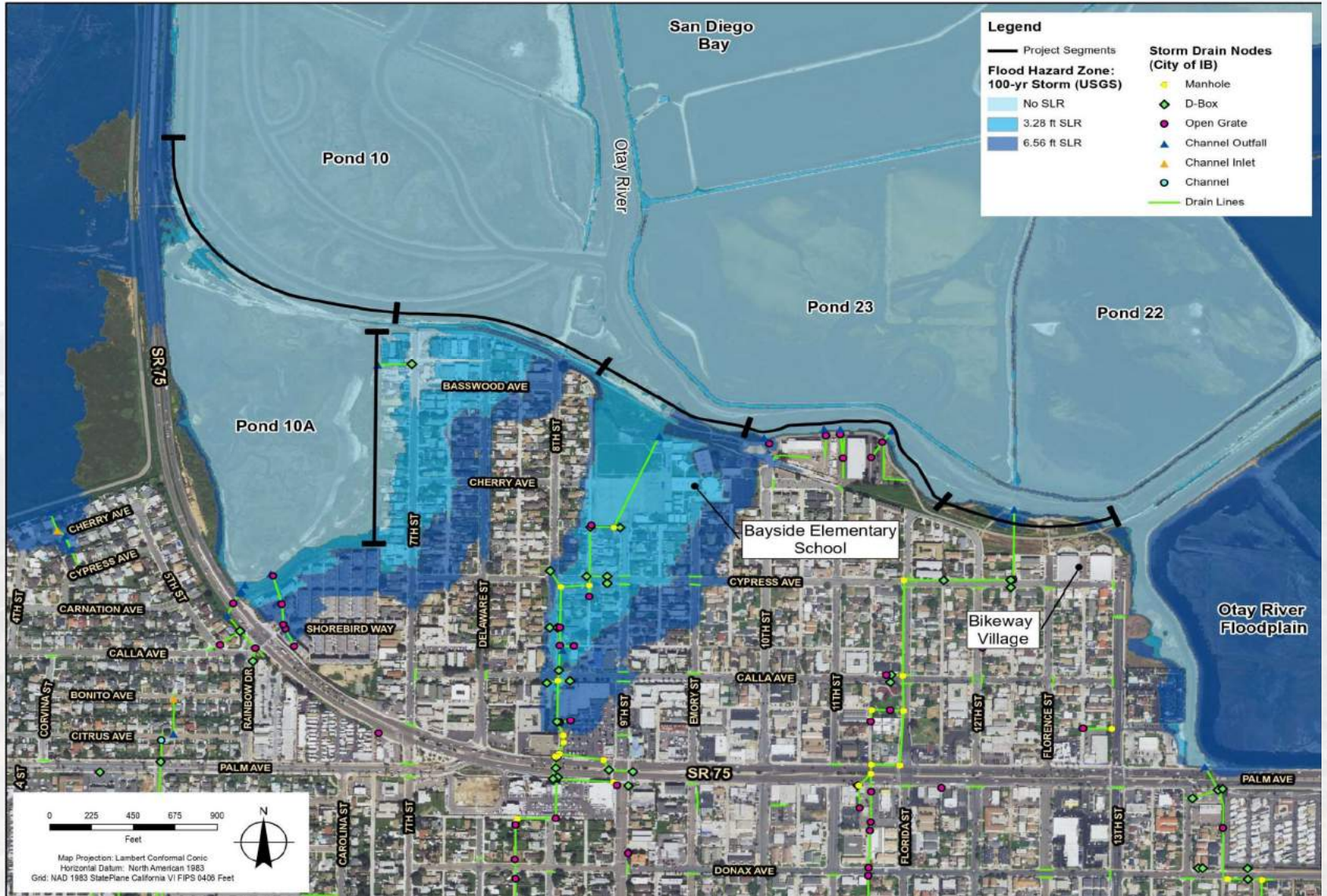


Coastal Hazards: Projected Sea Level Rise

Issues

- Prone to existing flooding
- Projected to be further impacted by future sea level rise



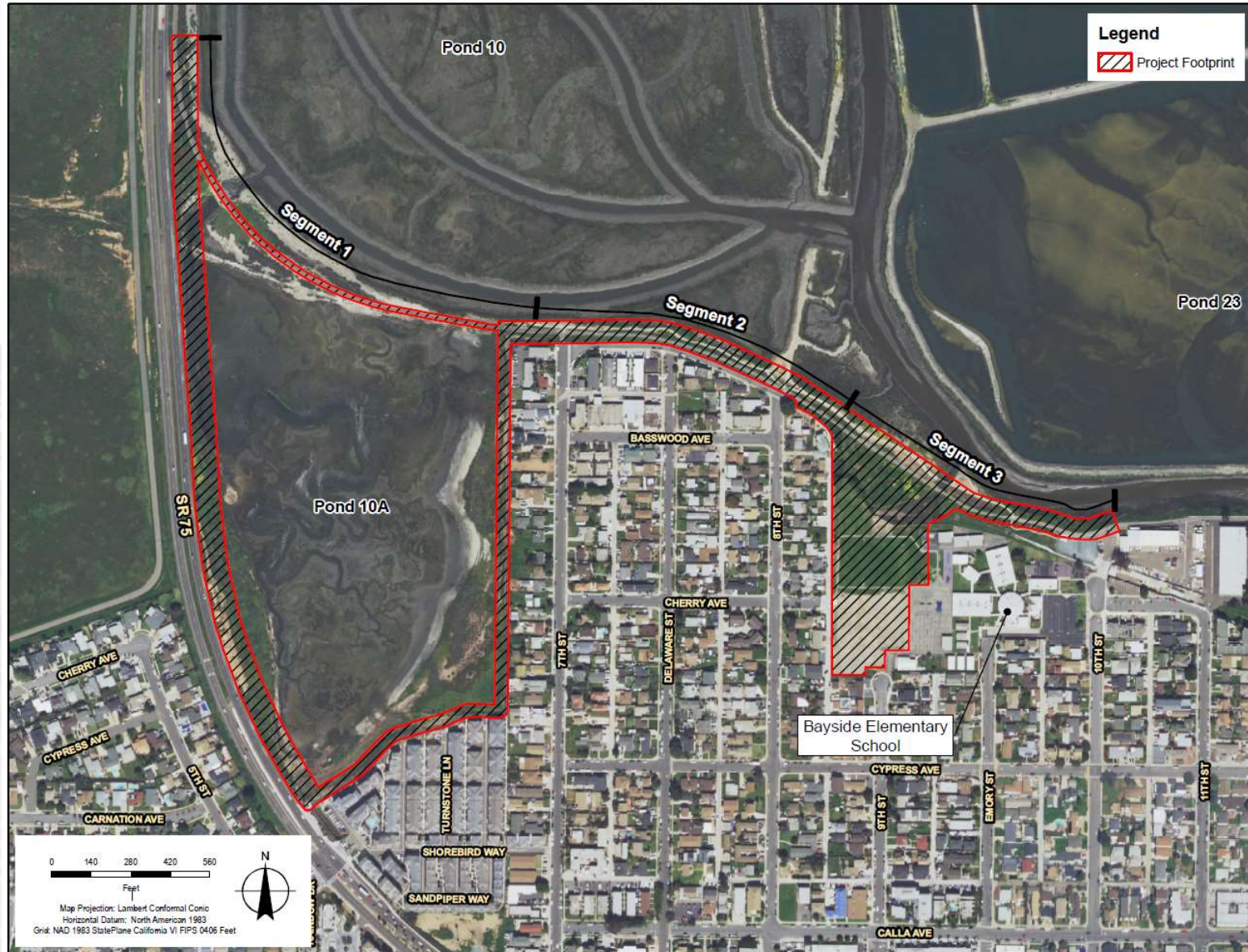
Project Location

Project Extent

- 1.2-mile segment of the San Diego Bayshore Bikeway
- Pond 10A
- Portions of Bayside Elementary School

Project Features

- Living Shoreline
- Multi-purpose Detention Basin
- Separated bicycle and pedestrian pathways



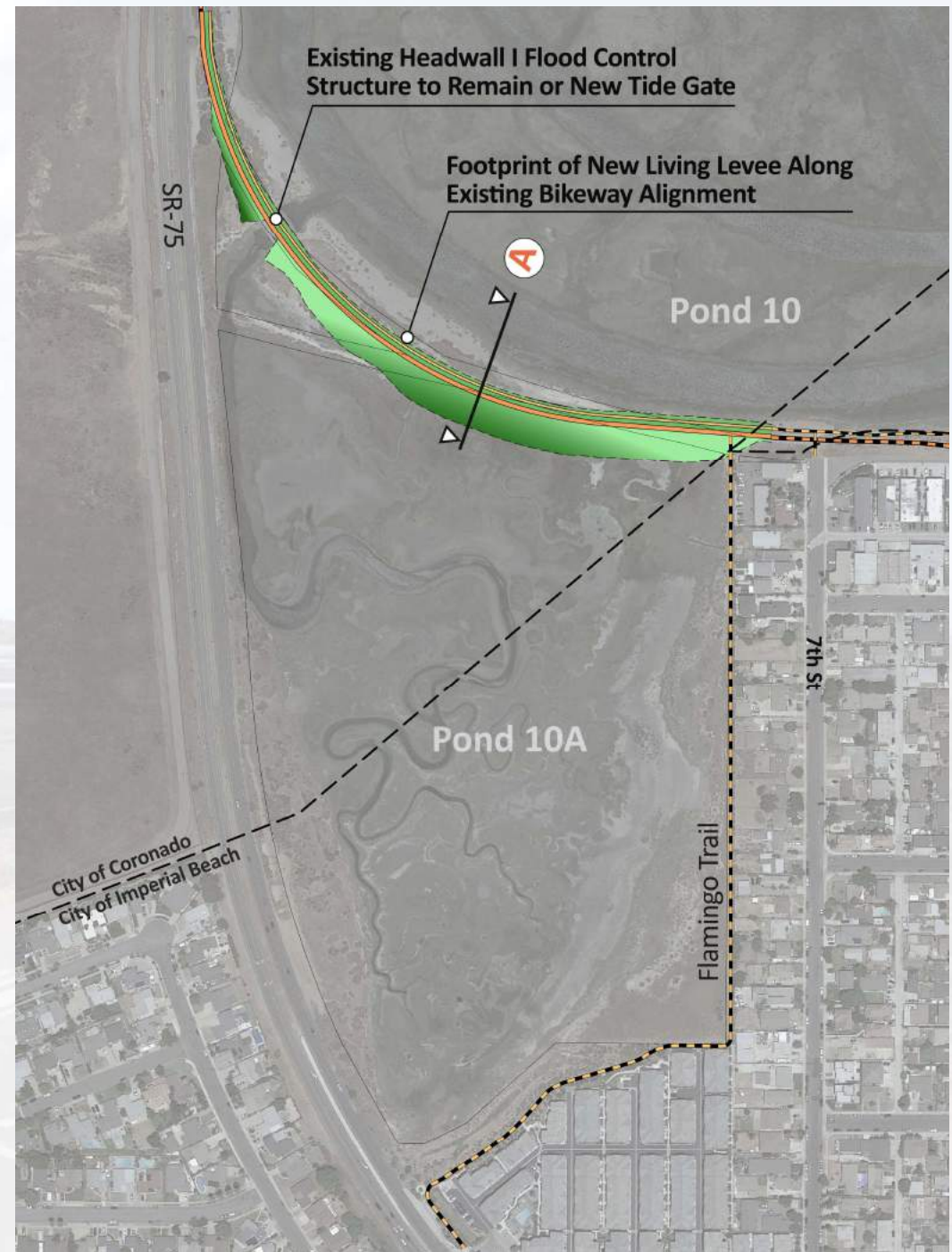
Segment 1 – Option 1A

- Living Levee along Existing Bikeway Alignment w/ existing or new headwall or flood control structure
- Maintains muted Pond 10A hydraulics.

EXISTING CONDITIONS

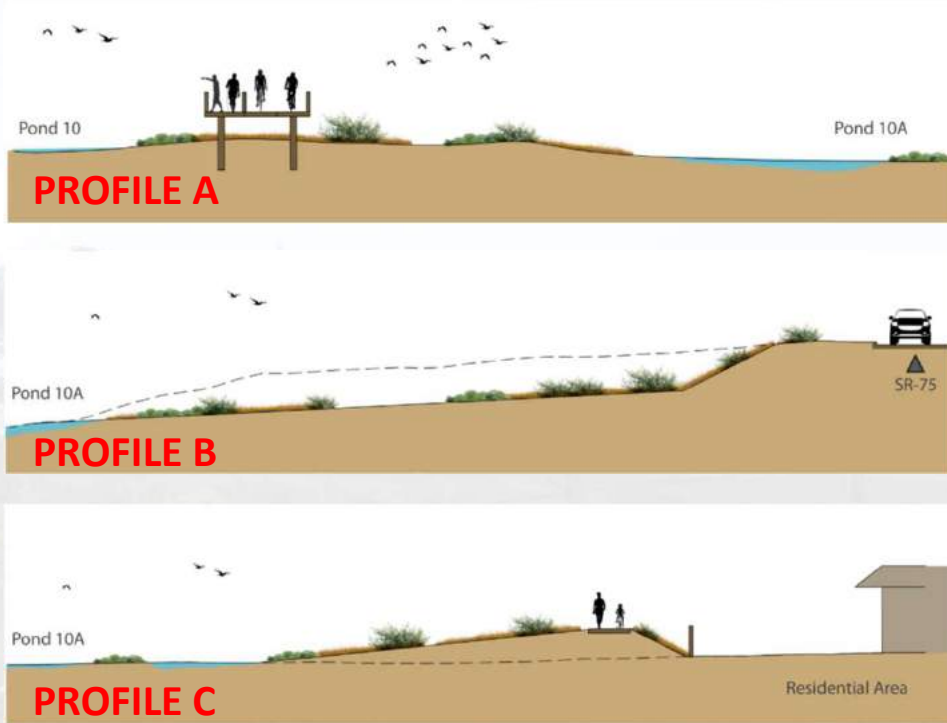


PROFILE A



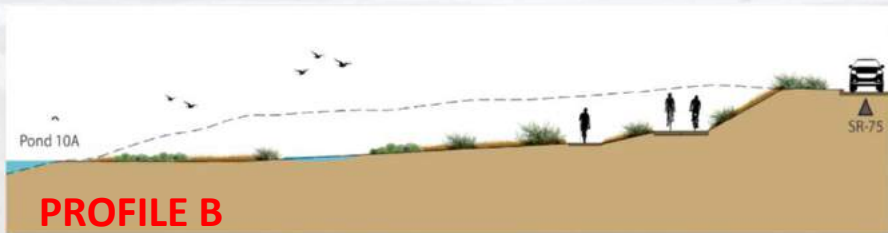
Segment 1 – Option 1B

- Remove muting to 10A through new tidal connection / pilot channel.
- Living levee around 10A to provide flood protection.



Segment 1 – Option 1C

- Reroute bikeway around perimeter of Pond 10A.
- Demo bikeway fill prism – create pilot channel, restore habitat
- Ring levee around 10A to provide flood protection.



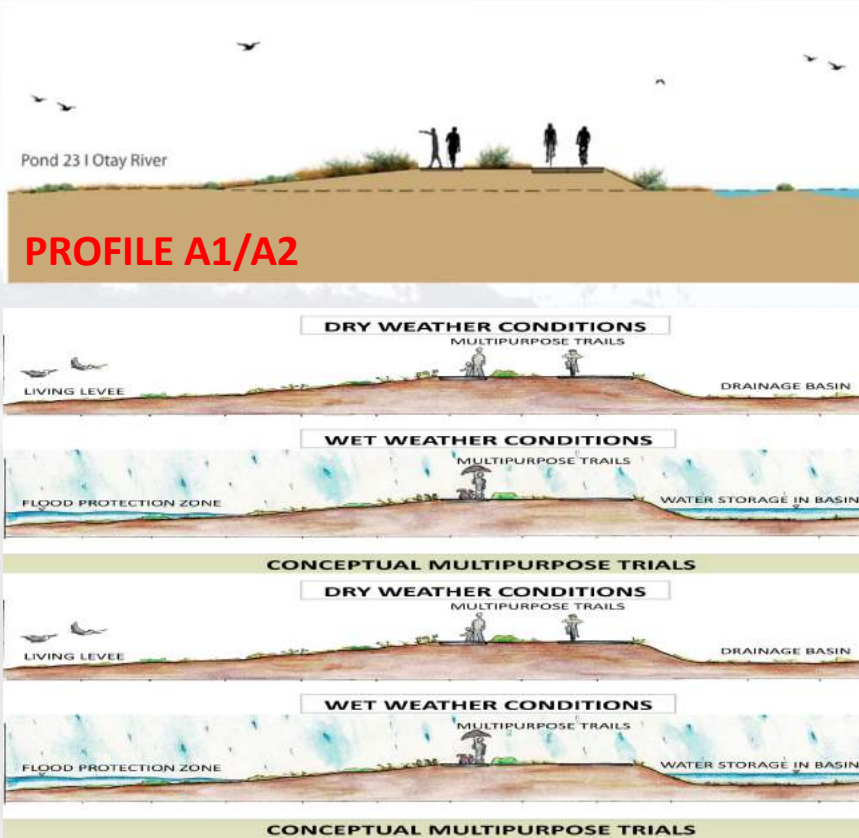
Segment 2

- **Option 1:** Living Levee within existing bikeway/multiuse trail footprint (~60 foot width); upland habitat creation focus
- **Option 2:** Living Levee transitional habitat slope into the wetland (~100 foot width); ecotone slope habitat creation
- **Option 3:** Living levee that balances/optimizes impacts with habitat creation opportunities (width TBD)

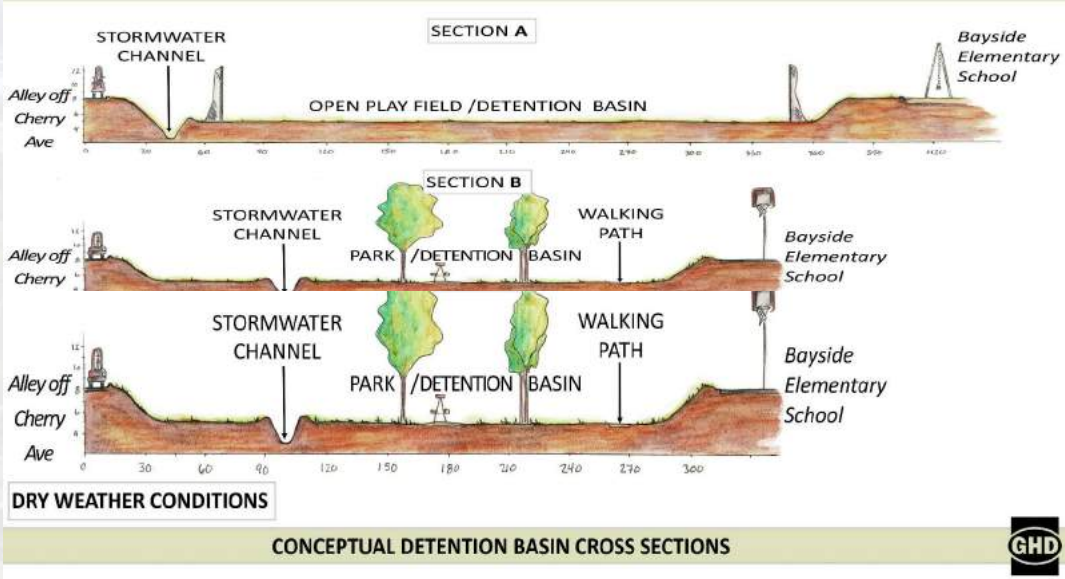


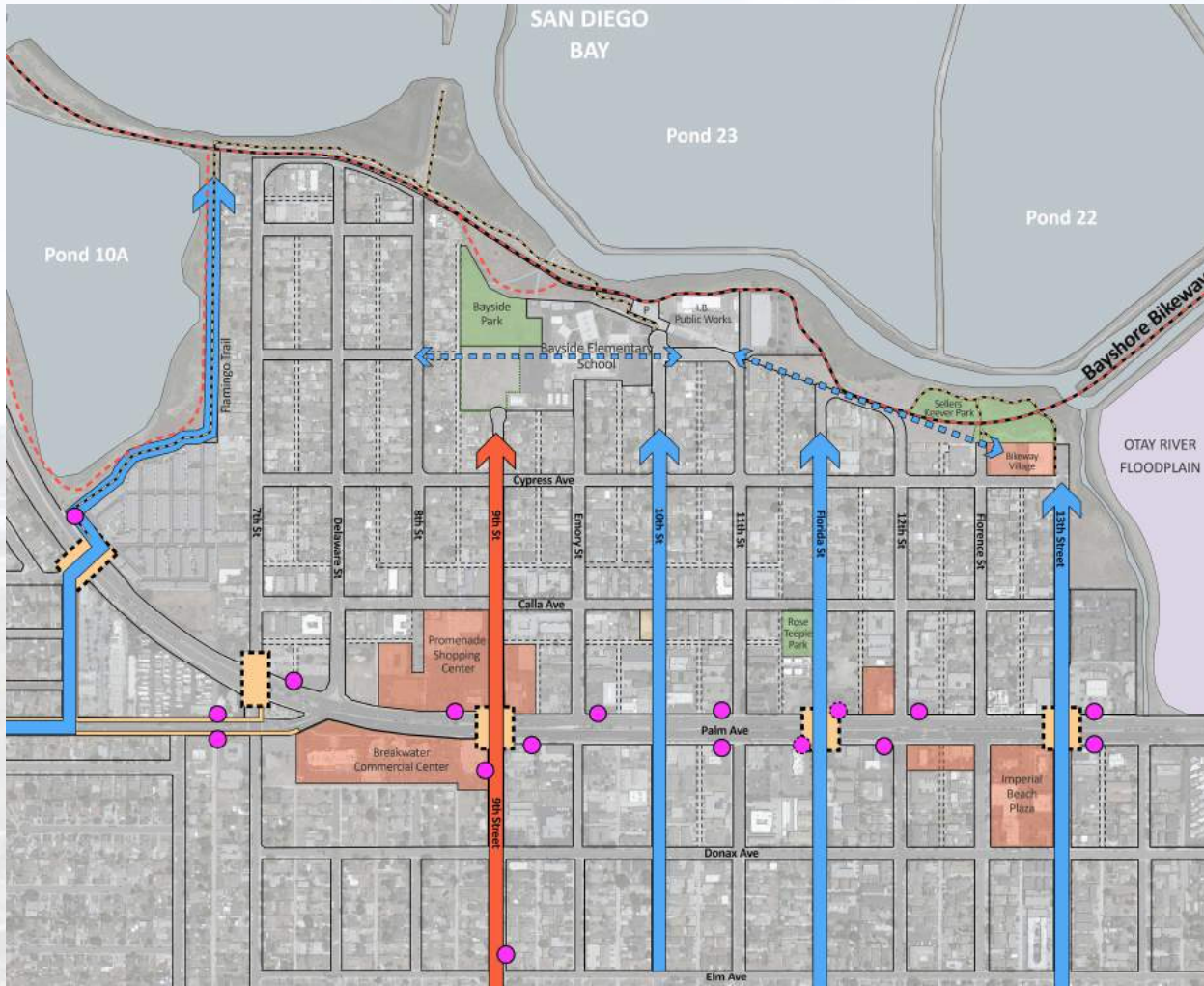
Segment 3

New Levee Along Existing/Relocated Alignment



Segment 3 – Multi-Purpose Detention Basin





March 19, 2022



Public Access

- Schools / Escuelas
- Park, Recreation Area, Community Green / Parque, Área Recreacional, Espacio Verde
- Commercial-Retail Center / Centro Comercial
- Marked Pedestrian Crossing / Cruce Peatonal
- Pedestrian Pathway - Trails / Vía Peatonal - Senderos
- Bayshore Bikeway / Ciclovía Bayshore
- Primary Access / Acceso Principal
- East West Improved Connections / Conexiones Mejoradas Este Oeste
- Main Downtown Access (City Hall & Library) / Acceso Centro Principal (Ayuntamiento y Biblioteca)
- Existing Transit Stop / Parada de Tránsito Existente
- Future Transit Stop / Parada de Tránsito Futura

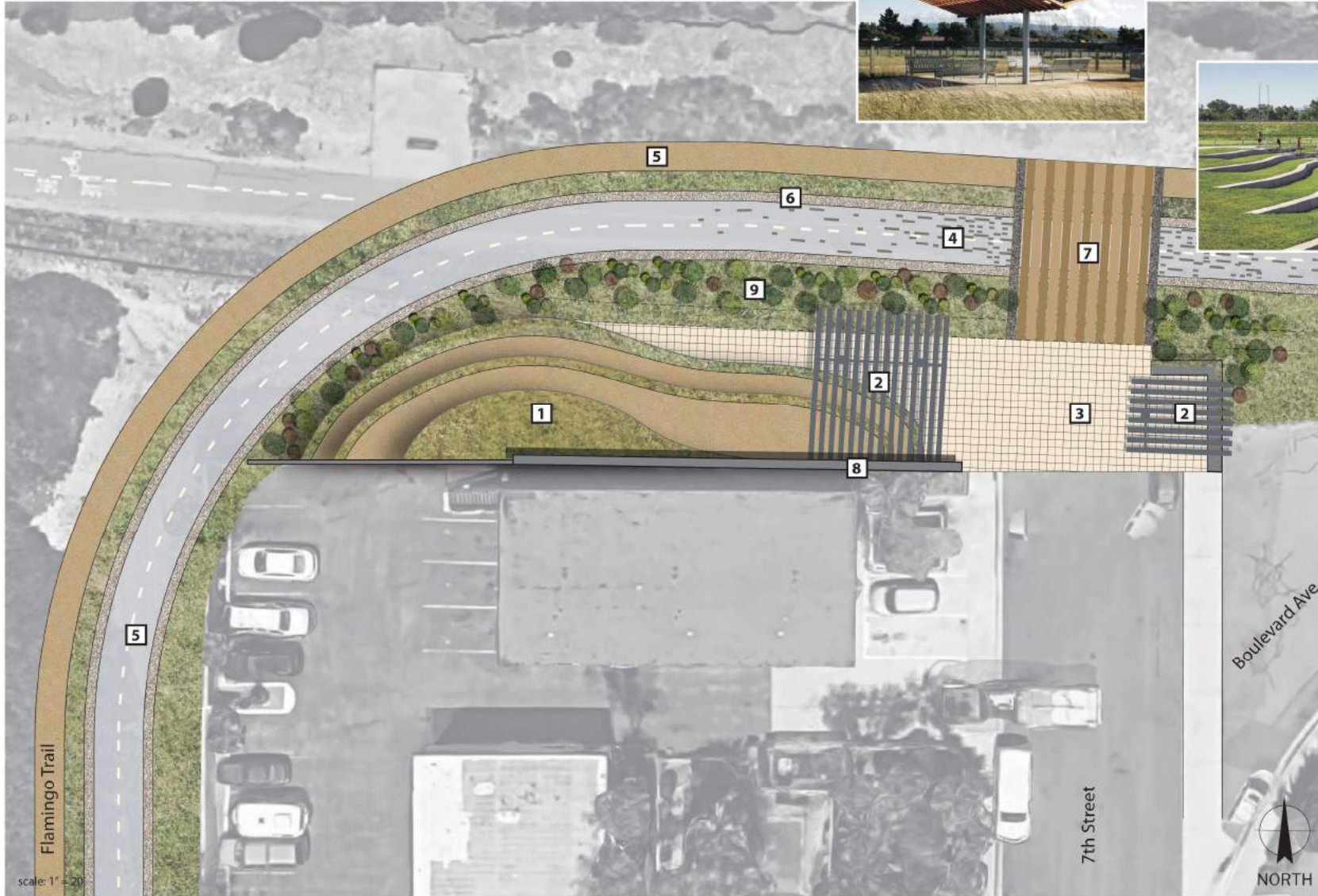
Flamingo Trail Node Concept - Option 1a and 1b



1. Grassy Mound/ Overlook
2. Sculptural Trellis
3. Staging Area/ Bench
4. Bike Path with Paving Markers
5. DG Pedestrian Trail
6. Gravel Shoulder
7. Enhanced Paving
8. Concrete Wall (3' to 5' tall)
9. Planted Berm
10. Multi-Use Path

DRAFT - 8/9/2022 - For Discussion Only All images are shown to illustrate planning concepts only and do not represent a design, project or development proposal

Flamingo Trail Node Concept - Option 1c



1. Grassy Mound/ Overlook
2. Sculptural Trellis
3. Staging Area/ Bench
4. Bike Path with Paving Markers
5. DG Pedestrian Trail
6. Gravel Shoulder
7. Boardwalk
8. Concrete Wall (3' to 5' tall)
9. Planted Berm

DRAFT - 8/2/2022 - For Discussion Only

All Images are shown to illustrate planning concepts only and do not represent a design, project or development proposal

8th Street Node Concept



1. Curved Bench under Existing Tree
2. Concrete Stairs
3. Boardwalk Crosswalk
4. Bike Path with Paving Markers
5. DG Pedestrian Trail
6. Gravel Shoulder
7. ADA Ramp
8. Enhanced Paving
9. Concrete Wall (3' to 5' tall)

Bayside Park Node



1. Fencing
2. Sculptural Trellis
3. Staging Area/ Bench
4. Bike Path with Paving Markers
5. DG Pedestrian Trail
6. Gravel Shoulder
7. Boardwalk
8. Concrete Wall (3' to 5' tall)
9. Planted Berm

scale: 1" = 30'

DRAFT - 8/2/2022 - For Discussion Only

All images are shown to illustrate planning concepts only and do not represent a design, project or development proposal

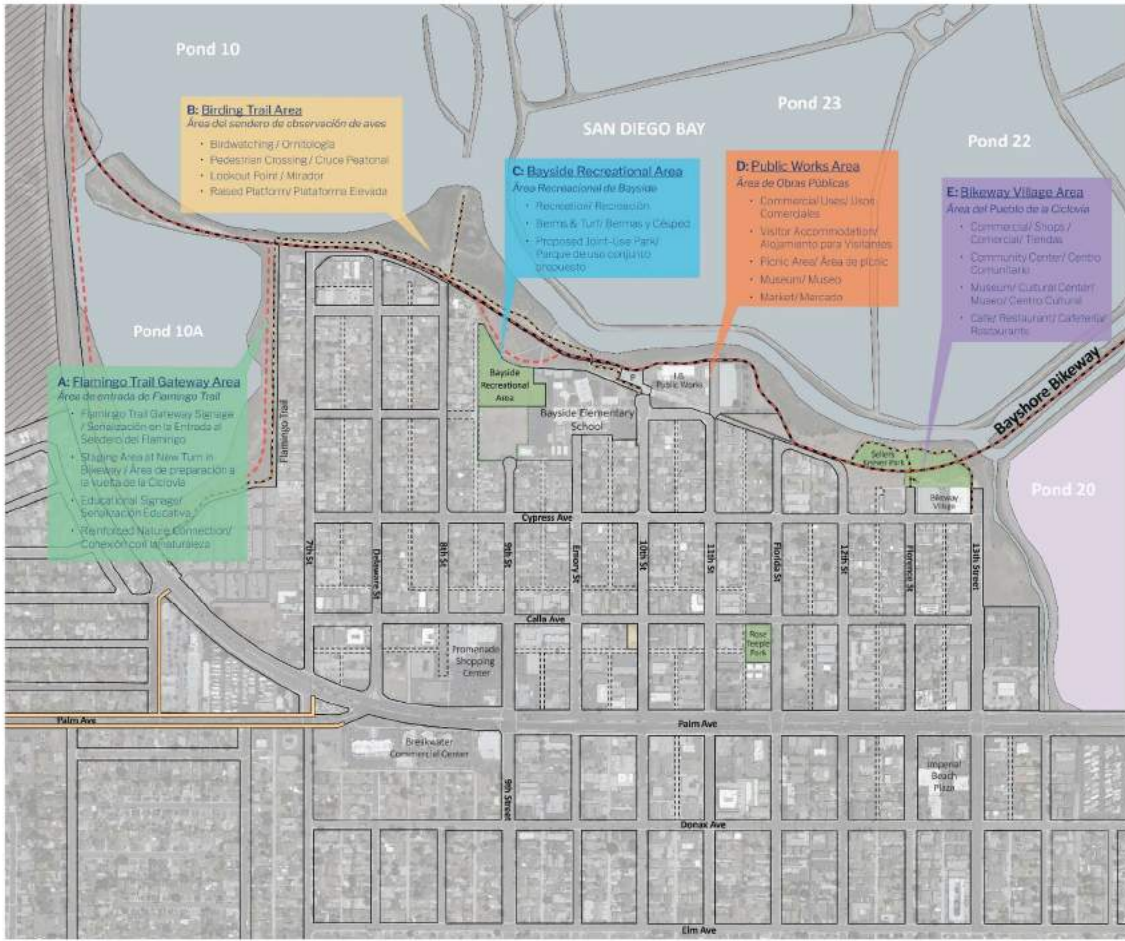
Typical Trail Crossing Concept



1. Bike Path with Paving Markers
2. DG Pedestrian Trail
3. Gravel Shoulder
4. Boardwalk Crossing
5. Wood Fencing/ Barrier
6. Planting Area

Activation Concepts

Conceptos de Activación



March 15, 2022

