



KIESEL DESIGN

Kiesel Landscape Architecture Inc.

422 E Main Street  
Ventura, CA 93001  
(p) 805.947.0730  
Jackie@kieselandscape.com  
CL# 5206

Raising Canes Imperial Beach RC#886

900 Palm Ave  
Imperial Beach, CA 91932

Submittals:  
# DATE NAME  
12.13.21 Entitlement Submittal  
03.01.22 Entitlement Resubmittal  
07.11.22 Entitlement Resubmittal



Type: CUP Submittal

Initial Setup Date:  
November 22, 2021

Drawn By:  
# NAME DATE  
Y. Zhang 07/2022

© 2019 Kiesel Landscape Architecture Inc. The design ideas and concepts contained herein are the property of Kiesel Design. Use of this design is permitted by contract only. The client releases Kiesel Design from liability without the written permission of Kiesel Design.

Title:  
**Conceptual Landscape Plan**

Sheet Number:

**L0.1**

Plant List

Symbols	Botanical Name	Common Name	Size	Qty	Mature Height	Size Width	WUCOLS
<b>Trees</b>							
	<i>Acacia podalyrifolia (multi)</i>	Pearl Acacia	24" Box	3	12 - 20 ft	15 - 20 ft	Low
	<i>Arbutus x 'Marina' (Standard)</i>	Marina Strawberry Tree	36" Box	1	15 - 35 ft	20 - 35 ft	Low
	<i>Brahea armata</i>	Mexican Blue Palm	36" box	3	25 - 40 ft	6 - 8 ft	Low
	<i>Cercis occidentalis (Standard)</i>	Western Redbud	24" Box	2	15 - 20 ft	15 - 20 ft	Low
	<i>Rhus lancea</i>	African Sumac	36" Box	4	20-30 ft	> 35 ft	Low
<b>Shrubs</b>							
	<i>Lantana x 'New Gold'</i>	New Gold Lantana	5 gal	10	12 - 15 in	18 - 24 in	Low
	<i>Mahonia 'Golden Abundance'</i>	Hybrid Oregon Grape	15 gal	13	5 ft	6 ft	Low
	<i>Olea europaea</i>	Little Olive	15 gal	56	6 - 8 ft	4 - 5 ft	Low
	<i>Rhipidolaphis umbellata 'Minor'</i>	Dwarf Yedda Hawthorn	15 gal	39	3 - 5 ft.	3 - 4 ft.	Low
<b>Perennials</b>							
	<i>Dianella 'Clarity Blue'</i>	Clarity Blue Flax Lily	5 gal	55	12 - 30 in	12 - 24 in	Low
<b>Succulents</b>							
	<i>Aeonium 'Blackbeard'</i>	Blackbeard Aeonium	5 gal	5	3 - 4 ft.	1 - 2 ft.	Low
	<i>Agave villmoriae 'Stained Glass'</i>	Stained Glass Octopus Agave	15 gal	4	4'-5"	4'-5"	Low
	<i>Aloe 'Blue Elf'</i>	Aloe 'Blue Elf'	5 gal	10	15 - 18 in	2 ft	Low
	<i>Aloe striata</i>	Coral Aloe	5 gal	54	2 - 3 ft.	1 - 2 ft.	Low
	<i>Euphorbia ammak</i>	African candelabra	15 gal	1	20 ft	1 - 3 ft	Low
	<i>Euphorbia rigida 'Silver Spurge'</i>	Silver Spurge	5 gal	13	1 - 2 ft.	2 - 3 ft.	Low
	<i>Hesperaloe parviflora</i>	Red Yucca	5 gal	31	3 - 4 ft	4 - 5 ft	Low
	<i>Kalanchoe luciae</i>	Paddle Plant	5 gal	33	1 - 2 ft	24 - 36 in	Low
	<i>Senecio ficoides 'Mount Everest'</i>	Skyscraper Senecio	5 gal	28	3 - 4 ft	1 - 2 ft	Low
	<i>Senecio serpens</i>	Blue Chalksticks	5 gal	24	<= 12 in	12 - 24 in	Low
<b>Total</b>				389			

Existing Tree Protection & Removal Notes

All existing plant material to remain and be protected unless otherwise noted.



Existing Notes

- A (E) utility risers and vault
- B (E) palm

Proposed Notes

- ① (P) order board per Architect
- ② (P) pre order board per Architect
- ③ (P) patio furniture per Architect
- ④ (P) headache bar per Architect
- ⑤ (P) long term bike storage per Architect
- ⑥ (P) overhead structure per Architect
- ⑦ (P) perimeter wall and pillars per Architect
- ⑧ (P) light post per Electrical (TYP)
- ⑨ (P) mortared in gravel

Materials Legend

Material	Size	Area
	1"-4" DIA	49 SF
	3/4" DIA	4,153 SF
	28" - 32" DIA	5 (QTY)
	32" - 40" DIA	4 (QTY)
	40" - 50" DIA	4 (QTY)
	Direct Colors® Smockstack 102 - 5lb integral colored concrete W/ 3/8" sawcut joints. Finish: TOPCAST ® #05	855 SF
	Natural colored concrete W/ 3/8" sawcut joints. Finish: TOPCAST ® #05	1,379 SF

\*Crushed Stone Supplier: SiteOne Landscape Supply (562)315-3139  
\*Integral Colored Concrete Supplier: Direct Colors <https://www.directcolors.com/>

IRRIGATION NOTES:

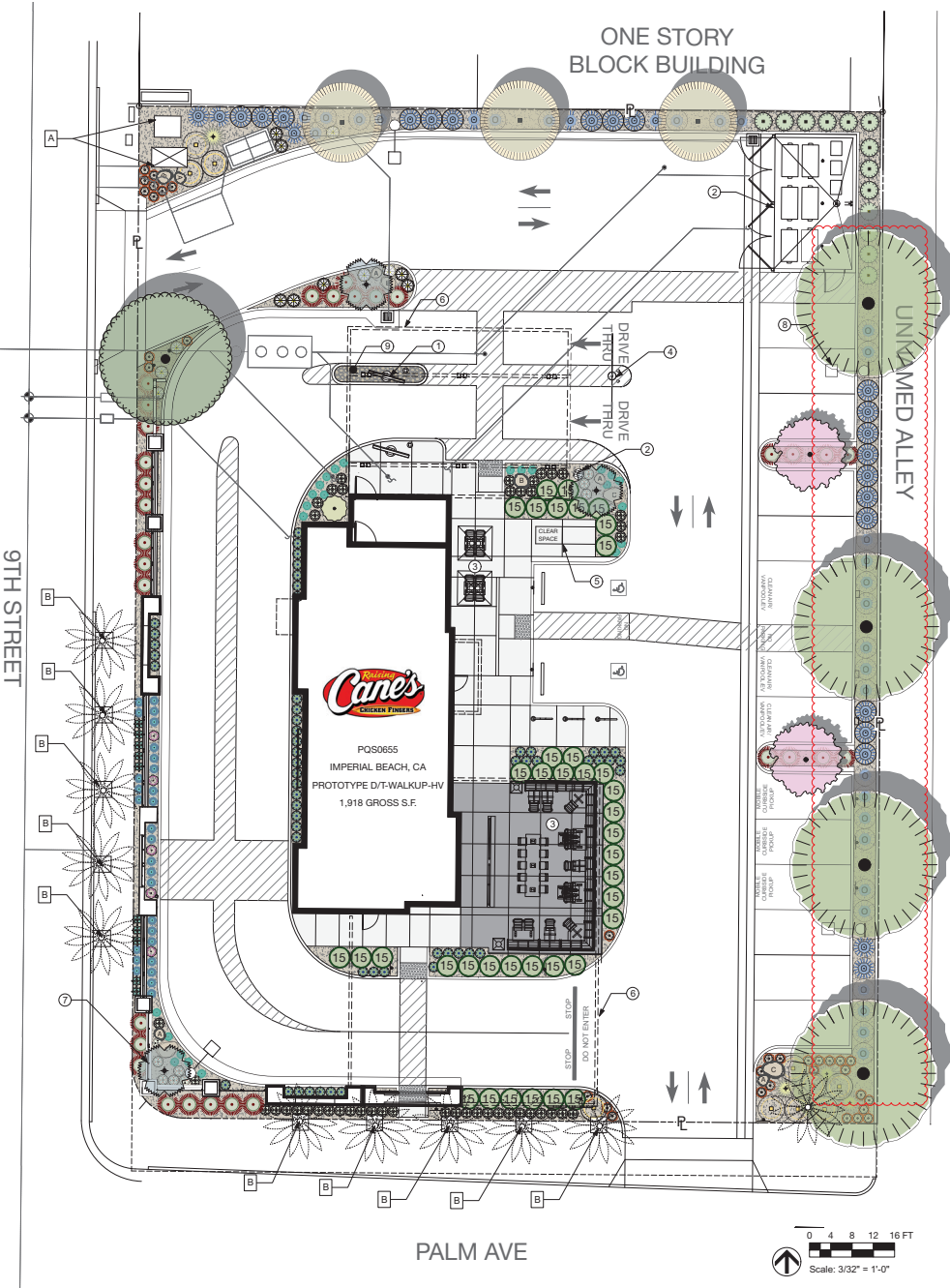
1. Landscape Plan are in compliance with the State Model Efficiency Landscape Ordinance (MWELO), 100% of plant material are drought tolerant and low water use per WUCOLS.
2. The design of the irrigation system shall conform to the hydrozones of the landscape design plan.
3. In all planting areas, low volume water irrigation (subsurface drip) will be provided to maximize water infiltration into the roots.
4. A dedicated water meter shall be provided for common landscape area.
5. A weather base "smart controller" shall be utilized. Controller shall be programmed to water in early morning or night.
6. A rain sensor shall be installed at each controller.
7. Water use calculation shall certify conformance with the current requirements.
8. Trees are to be irrigated by bubbler.

TOTAL LANDSCAPE AREA: 4,154 SF (15.6%)

SITE AREA: 26,588 SF

PROJECT TYPE: Commercial

WATER SUPPLY: Potable



PALM AVE





KIESEL DESIGN

Kiesel Landscape  
Architecture Inc.

422 E Main Street  
Ventura, CA 93001  
(p) 805.947.0730  
Jackie@kieseldesign.com  
CL# 5206

**Raising Canes  
Imperial Beach  
RC#886**

900 Palm Ave  
Imperial Beach, CA 91932

**Submittals:**  
# DATE NAME  
12.13.21 Entitlement Submittal  
03.01.22 Entitlement Resubmittal  
07.11.22 Entitlement Resubmittal

Shade Trees



Arbutus 'Marina'



Rhus lancea

Accent Trees



Cercos occidentalis



Acasia podalyriifolia



Brahea armata

Patio Screen Shrub



Rhapiolepis umbellata 'Minor'

Drive Thru Screen Shrub



Olea europea 'Little Ollie'

Shrubs



Lantana 'New Gold'

Defensive Screen Shrub



Mahonia 'Golden Abundance'

Perennials



Dianella 'Clarity Blue'



Aeonium 'Blackhead'



Euphorbia rigida

Succulents



Agave vilmoriniana 'Stained Glass'



Aloe striata



Aloe 'Blue Elf'



Hesperaloe parviflora



Senecio Serpens



Senecio 'Mount Everest'



Kalanchoe luciae



Euphorbia ammak

Materials



Apache Sunset Boulders



Copper Canyon Crushed Stone



Natural colored concrete  
with 3/8" sawcut joint



Smockstack 102 integral colored  
concrete with 3/8" sawcut joint



1"-4" crushed gravel mortared in  
colored cement



Type: CUP Submittal

Initial Setup Date:  
November 22, 2021

Drawn By: Y. Zhang DATE 07/2022

© 2019 Kiesel Landscape Architecture Inc. The design ideas and all other information herein are the property of Kiesel Design. Use of this is limited to project only. The use of material or other work is prohibited without the written permission of Kiesel Design.

Title:

**Site Materials  
Board**

Sheet Number:

**L0.2**